



International Neuropsychological Society

Global Innovations in Science
and Practice

2022 Meeting

Barcelona, Spain | July 6 – 8, 2022



Founded in 1967

International Neuropsychological Society



Federación de Asociaciones de Neuropsicología Españolas



Consorcio de
Neuropsicología
Clínica



Welcome address

2022 INS MidYear Meeting Program Committee:

Global Innovations in Science and Practice

We are pleased and honoured to welcome you to the International Neuropsychological Society 2022 meeting in Barcelona, held in association with the Spanish Federation of Neuropsychological Societies (FANPSE) and the Consortium of Neuropsychology. The INS, FANPSE and Consortium are delighted to be hosting this meeting together.

The conference theme, “Global Innovations in Science and Practice” is inspired by the current situation in the world, and the years of commitment by the INS Global Engagement Committee to encourage a dialogue across different cultures and approaches to science. We hope that this inspiration together with all the attractions that the city of Barcelona offers will stimulate all attendees to further enhance the development of science and practice and implement new and better solutions for people. Over many years, the neuropsychological community created by INS has inspired us to seek new knowledge and practices that benefit people’s lives.

Throughout the pandemic we have faced many health and related challenges. This difficult time has shown us that the impact of global challenges affects all of us and, despite some singularities, we share common concerns. These unite us, perhaps in ways even more powerfully than ever before. We have an opportunity to demonstrate that science and the practical application of scientific knowledge, remain highly relevant to our lives and our global society. As we search for solutions we take necessary steps to extend our progress working for a healthier and more just society. It is now, more than ever, a time for unity, generosity, shared knowledge, and innovative solutions. We would like this Barcelona congress to be a meeting that brings us together to share knowledge that will contribute to the application of solutions for patient’s health, and to continued collaboration and unity.

Our great hope is that the Pandemic obstacles will ease and we will meet in person in Barcelona. We hope to gather together in a city that represents knowledge, avant-garde, projection for the future, and multiculturalism. This Barcelona congress is intended to be a connection bridge for attendees from all parts of the world. We will have an excellent scientific program by preeminent colleagues. All of the traditional INS formats are planned, including Continuing Education workshops, plenary lectures, and quality symposia, paper sessions, and poster sessions. Come to Barcelona and participate in this festival of global knowledge! We look forward to welcoming you there!

Natalia Ojeda, Ph.D.

Barcelona 2022 – Program Co-Chair

Juan Olmo

President, Spanish Federation of Neuropsychological Societies (FANPSE) – Program Co-Chair

Manuel Cid, Ph.D.

VicePresident, Consortium of Clinical Neuropsychology (Consortium) – Program Co-Chair

Hans-Otto Karnath, Ph.D., M.D.

President, Federation of European Societies of Neuropsychology (FESN)

Ida Sue Baron, Ph.D., ABPP

President, International Neuropsychological Society



Keynote Speakers

TIL WYKES

King's College London, United Kingdom



Wednesday, July 6TH, 12:00-13:00, AXA Auditorium

Improving recovery in people with schizophrenia through cognitive remediation therapies

Bio

Professor Dame Wykes is professor of Clinical Psychology and Rehabilitation at the King's College of London and Vice Dean for Mental Health & Psychological Sciences at the IoPPN. Professor Wykes has a wide ranging portfolio of research into treatment developments and evaluation including digital technology solutions to mental health treatment.

She has been involved in research in mental health treatments and services for many years and is currently part of SMARTEN, an ESRC funded network on student mental health. She founded and is now Co-Director of the Service User Research Enterprise (SURE), which employs expert researchers with experience of using mental health services. She edits the Journal of Mental Health, is president elect of the Schizophrenia International Research Society, and chair of the Cognitive Remediation Experts Workshop. She is fellow of the Academy of Medical Sciences, the Academy of Social Sciences and the British Psychological Society. She was awarded a Damehood for her work in mental health.

IDA SUE BARON

George Washington University, Washington, DC, USA



Wednesday, July 6TH, 16:30-17:30, AXA Auditorium

Anesthesia: A Wake-Up Call. Part 1. Lifespan Effects in Animals and Humans

Bio

Dr. Baron is Clinical Professor Emerita at The George Washington University School of Medicine & Health Sciences in Washington, DC, where she initiated a neuropsychology service at Children's National Medical Center in Washington, DC in 1971. She recently retired from independent private practice. She is board certified as a Clinical Neuropsychologist and as a Subspecialist in Pediatric Clinical Neuropsychology by the American Board of Clinical Neuropsychology (ABCN), and past-President of the ABCN Board. Her child development background and clinical experience as a lifespan neuropsychologist provided opportunities for widely ranging research involvement, including with preschoolers born preterm.

Dr. Baron has authored or edited several neuropsychology textbooks, including Neuropsychological Evaluation of the Child: Domains, Methods, Case Studies, 2nd Ed. (2018). A new volume about neuropsychological development through the preschooler years is in preparation.



Keynote Speakers

CHIARA NOSARTI

King's College London, United Kingdom

Thursday, July 7TH, 12:00-13:00, AXA Auditorium

Brain and behaviour following very preterm birth

Bio

Professor of Neurodevelopment and Mental Health in the Department of Child and Adolescent Psychiatry at the Institute of Psychiatry, Psychology and Neuroscience and Head of Psychology and Outcome Studies at the Centre for the Developing Brain, King's College London. Her research focuses on the study of neurodevelopmental outcomes in typically and atypically developing individuals across the life-span.

Chiara leads the follow-up of several longitudinal studies, including the Developing Human Connectome Project and the Evaluation of Preterm Imaging study. Chiara uses multimodal neuroimaging in combination with cognitive, behavioural, social and environmental data in order to identify those children who are most vulnerable to psychopathology.



RAFAEL YUSTE

Columbia University, New York, USA

Thursday, July 7TH, 15:00-16:00, AXA Auditorium

NeuroRights: Human Rights Guidelines for Neurotechnology

Bio

Professor of Neurobiology, one of the initiators of the Obama's BRAIN Initiative, director of Columbia's Neurotechnology Center and the Director of the NeuroRights Initiative.



HANS-OTTO KARNATH

Centre for Neurology of Tuebingen University, Germany

Friday, July 8TH, 12:00-13:00, AXA Auditorium

Spatial neglect and the vestibular system

Bio

Full Professor of Neurology and Neuropsychology at the University in Tuebingen, Germany. He directs the Division of Neuropsychology at the Centre for Neurology of Tuebingen University; the Division has a focus on spatial cognition and object recognition in humans. Since 2010 he also is Adjunct Professor at the Department of Psychology of the University of South Carolina, USA. He received a Ph.D. in psychology, and an M.D. in medicine. In 2021, he became president of the Federation of European Societies of Neuropsychology (FESN).



Keynote Speakers

ADAM M. BRICKMAN

Columbia University, New York, USA



Friday, July 8TH, 17:30-18:30, AXA Auditorium

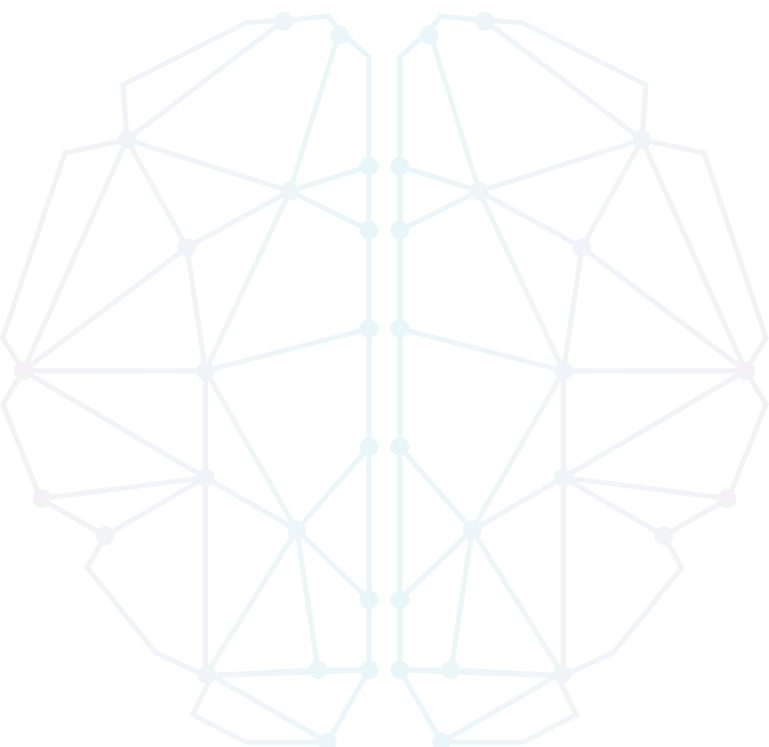
Alzheimer's disease or Alzheimer's diseases? Contemporary classification and the role of white matter abnormalities"

Bio

Adam M. Brickman, PhD is a tenured Professor in the Taub Institute for Research on Alzheimer's Disease and the Aging Brain and in the Department of Neurology at Columbia University. Dr. Brickman's work primarily focuses on understanding the vascular contributions to cognitive aging and Alzheimer's disease by integrating neuroimaging techniques with observational neuropsychological studies, basic neuroscience, and epidemiological approaches. He is also interested understanding sources of racial and ethnic disparity in Alzheimer's disease, developing interventions for cognitive decline in aging, and designing neuropsychological instruments to assess cognition in older adults.

Dr. Brickman leads neuroimaging efforts in several large community- and clinic-based observational studies, such as the Washington Heights Inwood Columbia Aging Project (WHICAP), the WHICAP Offspring Study, the Alzheimer's Biomarker Consortium-Down Syndrome (ABC-DS), and others. Dr. Brickman is the Core Leader of the newly established Columbia Alzheimer's Disease Research Center Biomarker Core.

Dr. Brickman completed his undergraduate studies in neuroscience and psychology at Oberlin College, his PhD in psychology/neuropsychology at the City University of New York, his clinical internship at Brown Medical School, and his postdoctoral training at Columbia University, where he has been on faculty since 2007.



CE Workshops

JON EVANS

University of Glasgow, United Kingdom



Wednesday, July 6TH, 09:00-12:00, AXA Auditorium

Neuropsychological rehabilitation for attention and executive functioning: evidence-based strategies

Attention and executive functions are fundamental for successful everyday living, frequently impaired by brain injury or disease, and therefore important targets for rehabilitation interventions. This session will begin with an overview of some of the key theoretical frameworks that aim to explain the cognitive and anatomical systems that support attention and executive functions. The use of these theoretical models in the formulation of attention and executive dysfunction in the context of brain injury or disease will be discussed. There will be a particular focus on the use of formulation to drive the selection of appropriate rehabilitation interventions. A range of evidence-based approaches to the rehabilitation of attention and executive functions will be presented, illustrated with examples of their application in clinical practice.

Learning Objectives

Attendees of this workshop will be able to: 1) Describe, and appraise, current theoretical models of attention and executive functioning; 2) Describe how the assessment and formulation of attention and executive functions can be used to guide selection of appropriate approaches to intervention in people with acquired brain injury; 3) Describe a range of evidence-based approaches to managing attention/executive functions and how they can be applied in clinical practice.

Bio

Jon Evans is Professor of Clinical Neuropsychology at the University of Glasgow and honorary Consultant Clinical Psychologist with NHS Greater Glasgow and Clyde. Jon was the first Clinical Director of the Oliver Zangwill Centre for Neuropsychological Rehabilitation in Ely, Cambridgeshire. He has received several awards from the British Psychological Society including the May Davidson Award, the Barbara Wilson Lifetime Achievement Award and the M.B Shapiro award. Jon has published more than 200 papers, books and book chapters in the field of neuropsychology and has a particular interest in the assessment and rehabilitation of disorders of attention and executive functioning after brain injury. He is Incoming President of the International Neuropsychological Society.



SKYE MCDONALD

University of New South Wales, United Kingdom



Wednesday, July 6TH, 09:00-12:00, AXA Hall 1

Social Cognition: How to intervene and what works

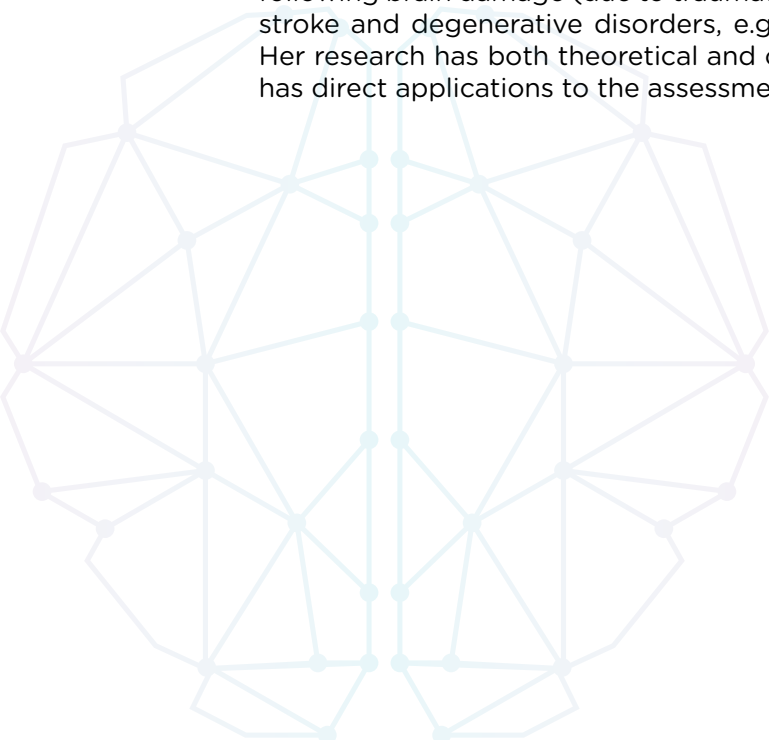
This session will introduce participants to basic constructs associated with social cognition and also some common instruments used for measurement. It will then focus on social cognition remediation. This will commence with a coverage of theory and main tenets associated with remediating social cognition based on the literature that spans the treatment of social cognition impairments arising from neurodevelopmental, neuropsychiatric and neurological disorders. It will discuss theoretical approaches based on principles of cognitive remediation, behavioural approaches and cognitive behavioural therapy. Specific aspects of remediation that take into account poor cognitive abilities and facilitate generalization, relevance and motivation will be covered. By way of example, the workshop will focus on some specific treatment approaches for remediating emotion perception, social skills and theory of mind (mentalizing).

Learning Objectives

This workshop is designed to assist you: 1) Describe different theoretical approaches to remediating social cognition; 2) Explain why certain approaches may be more suitable than others for different kinds of social cognitive impairment; 3) Select the most appropriate approach to remediating social cognition for the kind of client you are working with.

Bio

Professor Skye McDonald is Professor of Clinical Neuropsychology at the University of New South Wales. She is interested in understanding socio-emotional disorders following brain damage (due to traumatic injuries, neurological disorders, e.g. MS and stroke and degenerative disorders, e.g. Alzheimer's) and developmental disorders. Her research has both theoretical and clinical relevance. Professor McDonald's work has direct applications to the assessment and treatment of such disorders.



MELISSA LAMAR

Rush University Medical Center, USA



Wednesday, July 6TH, 09:00-12:00, NH Constanza Hotel - Barcelona Hall

Alzheimer's/Vascular Spectrum Dementia: Classification, Diagnosis, and Underlying Neuropathologie

Conceptualizations surrounding Alzheimer's and Vascular dementias have changed, for some, over the decades since the original diagnostic criteria for these neurodegenerative disorders were introduced. What has not changed for any, is the fact that the number of people diagnosed and living with these dementias continues unabated and there is no cure in sight. While targeting specific neuropathologies for drug development may make heuristic sense, clinically, 'pure' forms of Alzheimer's and/or Vascular dementia are rare. This CE workshop will not only outline research attempting to elucidate the interplay of these two dementing disorders, but discuss what it means for clinical assessment and diagnosis, and how it is represented in the underlying neuropathology present at death. Thus, while Alzheimer's and Vascular dementias may have distinguishing cognitive features in the earliest stages of disease, these features are more often than not present together for a more mixed profile of impairment. As the same may be said for their post-mortem neuropathological profiles, perhaps a better way to think of 'pure' Alzheimer's or Vascular dementia may be as two tails of a larger distribution along an Alzheimer's/Vascular Spectrum Dementia.

Learning Objectives

By the end of this workshop, attendees will have achieved the following learning objectives: 1) Discuss research outlining the interplay of Alzheimer's and Vascular dementias; 2) Explain assessment and diagnostic techniques for evaluating Alzheimer's/Vascular Spectrum Dementia in his/her/their practice; 3) List the underlying neuropathological profiles that may be present at death in individuals along the Alzheimer's/Vascular Spectrum.

Bio

Melissa Lamar, PhD, is a Professor in the Department of Psychiatry and Behavioral Sciences at Rush University Medical Center, and a Clinical Neuropsychologist in the Rush Alzheimer's Disease Center. She received her PhD in Clinical Neuropsychology from Drexel University and completed her postdoctoral training in Cognitive Neuroscience within the intramural program of the Laboratory of Behavioral Neurosciences at the National Institute on Aging. She worked at the Institute of Psychiatry King's College London and the University of Illinois at Chicago prior to joining the Rush faculty in 2016. Her research focuses on cardiovascular, cognitive and brain aging with a particular focus on Latinos and African Americans. Dr. Lamar employs novel neuroimaging and data analytic techniques including geographic information system mapping to identify modifiable factors that may increase health equity in brain aging. Additionally, she incorporates digital technology into her work assessing cognitive functioning to detect subtle alterations in behavior and pin-point their roots in brain. Dr. Lamar has published extensively on brain-behavior profiles of risk and resilience to Alzheimer's disease and related dementias and has received numerous honors and awards including Fellows status of the American Psychological Association and the Arthur Benton Award for Mid-Career Research from the International Neuropsychological Society.



T. RUNE NIELSEN

Copenhagen University, Denmark



Wednesday, July 6TH, 09:00-12:00, NH Constanza Hotel - Berlin Hall

Neuropsychological Assessment and diagnosis in culturally diverse populations

Although a certain degree of diversity has always been present in Europe, diversity levels have increased greatly over the last decades, starting with the immigration of labor workers from countries outside Europe in the 1960s and 1970s, followed by the influx of asylum seekers and refugees in more recent years. Several minority ethnic groups are at an increased risk of medical conditions that are associated with cognitive impairment, such as stroke, diabetes mellitus, and dementia. As a result, neuropsychologists in Europe will increasingly encounter patients from minority ethnic groups in their daily practice.

Several characteristics of minority ethnic groups may pose unique challenges to neuropsychologists. First, limited proficiency in the host country language is widespread among recently arrived immigrants and older people in some minority ethnic groups. Second, neuropsychologists may encounter substantial cultural barriers in their clinical practice. Third, low education levels or illiteracy are common among (older) people in various minority ethnic groups. Taking these barriers into consideration, administering a cross-cultural neuropsychological assessment requires neuropsychologists to acquire culture-competent skills and knowledge.

This workshop will present and discuss how language, (quality of) education, literacy, and culture may influence neuropsychological assessment based on recent research and clinical examples from the European context. Further, several newly developed cross-cultural neuropsychological tests for minority ethnic groups in Europe will be presented.

Learning Objectives

At the end of the workshop participants will be able: 1) To predict and explain language, cultural and educational influences on cognition and neuropsychological test performance; 2) To critically reflect on the validity and outcome of various neuropsychological tests when used for cross-cultural assessments; 3) To use this knowledge to prepare and conduct culturally informed neuropsychological assessments.

Bio

T. Rune Nielsen has been involved in research on cross-cultural neuropsychology and dementia in minority ethnic groups for more than a decade and has several years of clinical experience from the memory clinic setting. His research has mainly focused on challenges and possible solutions in cross-cultural neuropsychological assessment, and more recently post-diagnostic dementia care in minority ethnic groups. He is cofounder of Nordic and European research networks on dementia in minority ethnic groups and cross-cultural neuropsychology, has published more than 40 scientific papers on the topics, and has presented his research at several national and international seminars and conferences.



Symposium

SYMPOSIA SPONSORED BY THE SPANISH FEDERATION OF NEUROPSYCHOLOGICAL SOCIETIES (FANPSE)

Brain Resilience and Maintenance in Advanced Age: Mechanisms and Study Frameworks

Wednesday, July 6th, 14:00-15:20, AXA Auditorium

Chair:

David Bartrés-Faz, University of Barcelona, Spain

SYMPOSIA SUMMARY

From different frameworks, we will focus on factors and brain mechanisms that contribute preserved function in aging. Dr. Natalie Marchant will present evidence of how psychological aspects associate with cognition and brain health markers. Within the framework of resilience and resistance to Alzheimer's Disease (AD), Dr. Arenaza-Urquijo will discuss the importance of a sex/gender and lifespan perspective to account for the impact of lifestyles and stress managing. Dr. Lars Nyberg will argue how the concept of brain maintenance can explain neural and non-neural factors that regarding interindividual differences in memory and cognition. Finally, how the use of non-invasive brain stimulation represents a unique approach to investigate and enhance brain mechanisms underlying brain resilience and brain maintenance will be discussed by Dr. David Bartrés-Faz.

Can the way we think affect our cognitive and brain health?

Natalie L. Marchant

Resilience and resistance to Alzheimer's disease: mental health and lifestyle in people at increased risk for cognitive decline

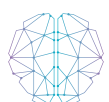
Eider M. Arenaza-Urquijo

Brain maintenance in aging – current status and future prospects

Lars Nyberg

Non-invasive brain stimulation to characterize and enhance brain resilience

David Bartrés-Faz



SYMPOSIA SPONSORED BY THE INS-SPECIAL INTEREST GROUP NEUROCOVID

Cross-Cultural Considerations and Updated International Results

Thursday, July 7th, 08:30-09:50, AXA Auditorium

Chair:

Jose A. Muñoz-Moreno, Germans Trias i Pujol Hospital, Spain

SYMPOSIA SUMMARY

There is an urgent need to develop rigorous investigation in NeuroCOVID, with neuropsychology as a fundamental pillar of this research. The study of neurocognitive complications is necessary in people with COVID-19 infection because SARS-CoV-2 negatively impacts the central nervous system. Moreover, symptoms may persist over time after the infection. Indeed, Long COVID is a clinically significant syndrome in about 15-20% of people who have had COVID-19, which impacts meaningfully on everyday living and quality of life. Because the pandemic is evolving, there is increasing evidence that NeuroCOVID is a central concern of COVID-19 making the role of the NeuroCOVID INS SIG ever relevant, with the main purpose of providing updated clinical and research resources in this new field of research. For the present INS 2022 Meeting in Barcelona (Spain), the SIG proposes the development of a symposium to point out relevant cross-cultural considerations in the NeuroCOVID field, as well to offer international results on pediatrics, rehabilitation, Long COVID, and a multicenter neuropsychological collaboration. This symposium will provide updated results on NeuroCOVID research, emphasizing the relevance of international neuropsychological collaborations in the assessment of COVID-19-related neurocognitive complications, as well as the necessity of rigorous and revealing results of the effects of COVID-19 infection in the central nervous system.

Inside Out and Upside Down: How COVID-19 Pandemic Has Been Affecting the Mental Health of Children and Youth

Theodore C.K. Cheung

Neurocognitive Rehabilitation of post- COVID-19 Patients: Review of international perspectives

Kalliopi Megari

Neurocognitive Profiles of Adult COVID-19 Long Haulers from a Multi-Center Health System in New York

Joanne Festa

Olfactory and Neurocognitive Function in Adult COVID-19 Survivors. A Multi-Center Study Online

Emilia Łojek

Relevant Cross-Cultural Aspects in NeuroCOVID: Primary Considerations from the NeuroCOVID INS SIG

Jose A. Muñoz-Moreno



Symposium

Cognitive Rehabilitation and Neuroimaging in Clinical Populations

Thursday, July 7th, 10:00-11:20, AXA Auditorium

Chair:

John DeLuca, Kessler Foundation, USA

SYMPOSIA SUMMARY

Evidence for cognitive rehabilitation has been accumulating for the past several decades across various clinical populations. More recently this evidence has started to include changes in the brain which have been shown to be associated with rehabilitation effectiveness. This symposium will summarize the behavioural and neuroimaging data associated with cognitive rehabilitation in four clinical populations: Traumatic Brain Injury, Schizophrenia, Multiple Sclerosis, and Aging and Dementia. Presentations will be given by leading researchers/clinicians from each respective field. Speakers will present current research findings, discuss the limitations of this work and discuss future research needs regarding behavioural and neuroimaging aspects of cognitive rehabilitation in each of their respective areas of expertise. The four presentations will be followed by a discussion on how such work impacts on clinical applicability currently and in the future.

Cognitive rehabilitation and neuroimaging in TBI

Katiuscia Sacco

Cognition oriented treatments and neuroimaging in Aging & Dementia

Benjamin Hampstead

Cognitive rehabilitation and neuroimaging in MS

John DeLuca

Cognitive Rehabilitation and Neuroimaging in Schizophrenia

Agurne Sampedro

Discussant and Q&A

Natalia Ojeda



Symposium

Negative affect and neurodegenerative diseases: Recent progress and future directions

Thursday, July 7th, 16:30-17:50, AXA Auditorium

Chair:

Elisa Di Rosa, University of Padova, Italy

SYMPOSIA SUMMARY

Neurodegenerative diseases, such as Alzheimer's and Parkinson's, have been the object of numerous neuropsychological studies in the last couple of years. Indeed, the rapid aging of the world population and the consequent increase in the prevalence of these age-related conditions, require immediate actions in order to improve diagnostic, treatment and, possibly, prevention strategies. However, despite the tremendous progresses made so far, one aspect of these diseases that is still lacking attention is the affective one. Indeed, while the cognitive and behavioural abnormalities in these disorders have been extensively studied, with research efforts also focused on the development of dedicated interventions, evidence concerning the impact of neurodegenerative disease on mood and affect are still scarce. This imbalance gives us an incomplete picture of these unfortunately always more frequent diseases, and therefore does not allow to make real progresses in their management and prevention strategies. Hence, with the present symposium we want to shed light on the affective side of pathological aging, presenting new evidence on 1) the impact of depression, anxiety and psychological distress in the manifestation of impulsive-compulsive behaviours of patients with Parkinson's disease, 2) the associations between depressive symptoms and cognitive performances in elderly outpatients with cognitive impairment, 3) the state and trait markers of Impulsive Compulsive Behaviours in Parkinson's and 4) progresses on the development of new treatment interventions for depressive symptoms in patients with Parkinson's disease.

Negative affect in Parkinson's disease: evidence from the COVID-19 pandemic

Elisa Di Rosa

Are affective disorders the first symptoms of cognitive impairment? Evidence in a sample of elderly outpatient

Alberto Sardella

Exploring state and trait markers of Impulsive Compulsive Behaviors in Parkinson's

Nicky Edelstyn

Dancing and music therapy to improve well-being and depression in Parkinson's Disease

Annelien Duits



Symposium

The Utilization of Wearable and Passive Technology in the Monitoring of Mental and General Health Status

Thursday, July 7th, 16:30-17:50, AXA Hall 1

Chair:

Isaac Tourgeman, Albizu University, USA

SYMPOSIA SUMMARY

This symposium is a multicenter collaboration featuring Albizu University and Massachusetts Institute of Technology - Institute for Medical Engineering and Science (imes) discussing the use of wearable technology to monitor neuropsychological and general health in a non-clinical population. Our research group is comprised of collaborators from multiple institutions and countries such as the United States, Mexico, Jamaica, Puerto Rico, Spain and China to address the health needs in our communities by focusing on providing technological advances to underserved populations. The primary goal of this symposium is to outline a study that has been designed to assess the utility of wearable and passive technology for data collection. A secondary goal of this symposium is to provide future directions and advice for those clinicians who aim to incorporate this technology into their own patient care, feedback, and rehabilitation. A pilot study is proposed to assess how data gathered via technology platforms can inform clinical prediction and correlate to gold standard questionnaire measurements in a cohort of college students. The findings attained from the non-clinical pilot study will then be incorporated into a multiphase clinical study incorporating the use of wearable and passive technology for the health monitoring of clinical participants with a history of cardiovascular disease and neuropsychological symptomatology. As background for our pilot study, we as a team have conducted a series of literature reviews to understand ideas such as digital phenotyping, public opinions on wearable technology, utility of technological data for monitoring psychological symptomatology, and the overall relationship between cardiovascular disease and mental health. Our research has been detailed in the four abstracts associated with this symposium with the intention of explaining the theory behind our pilot study and posing the questions to our empirical research aims to answer.

The Viability of Utilizing Wearable Technology for Digital Phenotyping

Jessica Frias

Public Opinions on Wearable Technology

Brooks Peterson

The Utility of Passive and Portable Sensor Data for Monitoring the Symptomatology of Depression and Anxiety

Dayron Gonzalez

Relationship Between the Methods of Monitoring Cardiovascular Disease and Mental Health

Stanley Chen



SYMPOSIA SPONSORED BY ASOCIACIÓN LATINOAMERICANA DE NEUROPSICOLOGÍA (ALAN)

Neuropsychological research in the Americas: From genes to brain, cognition, and everyday mental health

Thursday, July 7th, 18:00-19:20, AXA Auditorium

Chair:

Mauricio A. Garcia-Barrera, University of Victoria, Canada

SYMPOSIA SUMMARY

In this symposium, members of the Asociación Latinoamericana de Neuropsicología (ALAN) will present their recent neuropsychological research studies involving adolescents, adults, and older adults, and utilizing traditional and novel neuropsychological methods for the examination of brain and cognition relationships, including genetic genotypification, structural neuroimaging, neuropsychological assessment, and ecological momentary assessment (EMA). Specifically, Dr. Chamorro from the Institute of Neurosciences at the University of Guadalajara will present a study examining the relationships between a polymorphism of the catechol-O-methyltransferase (COMT) gene called Val158Met and mathematical skills, specifically looking at the contributions of executive functions to those associations. Also, from the University of Guadalajara's Institute of Neuroscience, Dr. Matute will discuss a longitudinal study examining memory and executive function change on a group of preclinical carriers of a mutation of the amyloid precursor protein (APP) associated with autosomal dominant AD (ADAD) and the valine to isoleucine amino acid substitution (V717I) versus non-carrier controls. Continuing with the theme examining typical and atypical aging, Dr. Rosselli from Florida Atlantic University will discuss a neuroimaging study looking at a series of associations between clinical diagnosis (from healthy aging to dementia), language experiences, and the volume of the corpus callosum and associated tracts in monolingual and Spanish-English bilingual older adults. To end, Dr. Garcia-Barrera from the Cortex Lab at the University of Victoria, will discuss a RCT study examining the effects of an 8-week physical activity training on the mental health of older adults, and specifically, data collected using a downloadable app designed for remote (online) EMA.

Yaira Chamorro

Esmeralda Matute

Mónica Rosselli

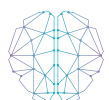
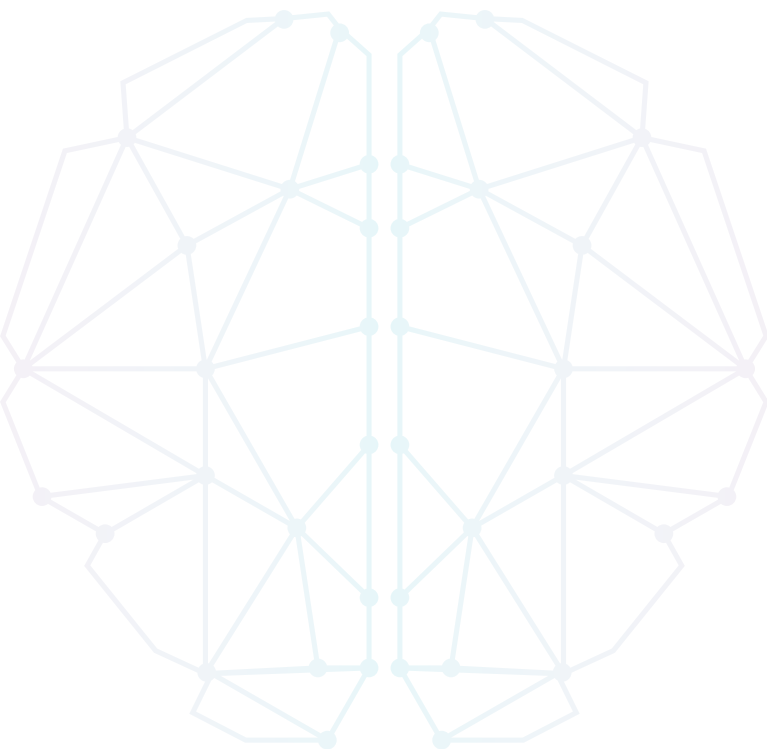


Symposium

SYMPOSIA SPONSORED BY THE INS STUDENT LIAISON COMMITTEE

Impact of cultural diversity on neuropsychological assessment and rehabilitation

**Thursday, July 7th, 18:00-19:20, NH Constanza Hotel -
Barcelona Hall**



SYMPOSIA SPONSORED BY THE INS CULTURAL SPECIAL INTEREST GROUP

Across cultures: Neuropsychological assessment of patients with focal and neurodegenerative disease

Friday, July 8th, 08:30-10:00, AXA Auditorium

Chair:

Francesca Arias, Hebrew SeniorLife, USA

Claudia Jeannette Peñaloza, Cognition and Brain Plasticity Group, Spain

SYMPOSIA SUMMARY

While using instruments that are congruent with the cultural and linguistic background of patients is expected in neuropsychological evaluations, resources to support these efforts are scant. The issue is more pronounced in age-related neurodegenerative diseases, as their prevalence is predicted to triple in the next three decades. Furthermore, older adults are often less acculturated compared to younger peers. This symposium aims to discuss factors relevant to culturally-competent translation and adaptation of tests as well as cognitive assessment of diverse populations. The challenges of this work will be illustrated with examples of patients with neurodegenerative diseases and focal brain lesions. Our symposium leverages global perspectives and aligns with recent emphasis on equity in clinical neuropsychology.

The first abstract sets the stage by providing a framework to guide the decision to adapt existing instruments or develop new ones. In this analysis of literature, Dr. Hallowell delineates the pros and cons associated with each alternative and the overarching social, cultural, and professional considerations that must inform this choice. The next abstract summarizes the socio-cultural and linguistic aspects relevant to cognitive assessments of Arabic-speaking patients. Dr. Taiebine will conclude his presentation by describing limitations associated with existing instruments and proving recommendations for clinicians working with Arabic-speakers. The last two abstracts illustrate the potential implications of linguistic and cultural diversity in Clinical Neuropsychology practice and research. Drs. Gavarró and Salmos will present results of the validation study for the Catalan version of the Comprehensive Aphasia Test (CAT). The results document the validity of the Catalan version of the CAT and factors such as patient education and age emerged as important predictors of performance. Finally, Dr. Calabria presents results from his investigation on cross-language interference in bilingual Catalan-Spanish patients with Parkinson's Disease, Mild Cognitive Impairment, and Alzheimer's Disease.

Overall, this symposium will provide a space to discuss factors relevant to test adaptation and cognitive assessment of linguistically and culturally diverse groups. Studies will illustrate the challenges of working with diverse groups. General recommendations on these topics will be provided.

Translate an existing test in another language or develop an original test? Factors to consider.

Brooke Hallowell

Cultural and linguistic aspects in neuropsychological assessment of neurodegenerative diseases in Arabic.

Mohamed Taiebine



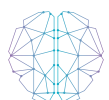
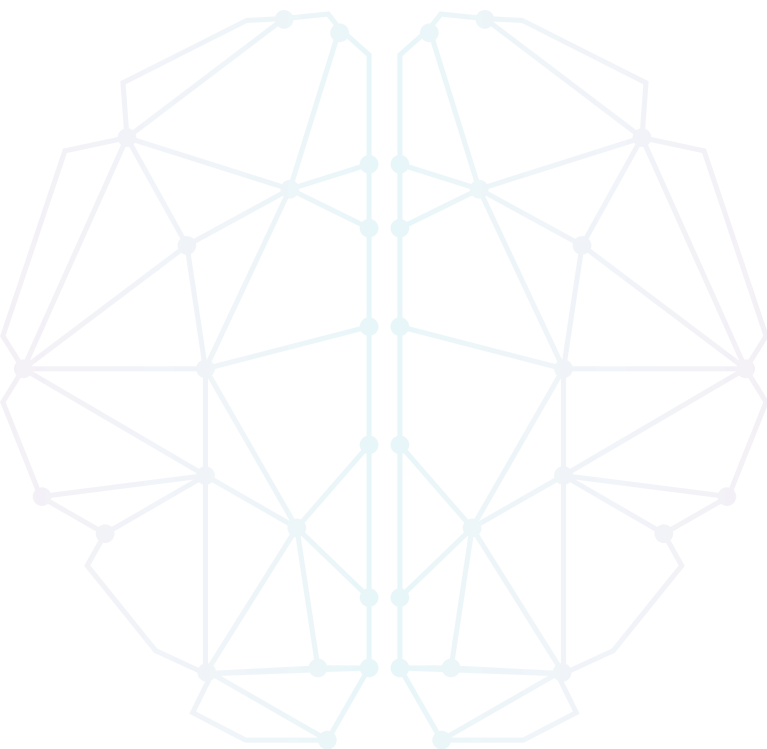
Symposium

The adaptation and standardization of the Catalan version of the Comprehensive Aphasia Test.

Io Salmons

Cross-language interference and facilitation in neurodegenerative diseases

Marco Calabria



Neuropsychological Evaluation and Tasks Proposals to meet needs of the Legal Context

Friday, July 8th, 08:30-10:00, NH Constanza Hotel - Berlin Hall

Chair:

Andrea Horta-Barba, Hospital de la Santa Creu i Sant Pau, Spain

SYMPOSIA SUMMARY

Forensic Neuropsychology is a relative new discipline which is rapidly evolving. Is a subspecialty of clinical neuropsychology which encompasses the application of the neuropsychological science and psychological assessments within a legal context.

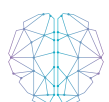
The United Nations Convention on the rights of persons with disabilities, held in New York in 2006, has generated very relevant changes in the legislative need to adapt access to justice for persons affected by a disability to guarantee the exercise of their rights.

The Spanish legal system has incorporated these changes, emphasizing the principles of equality and accessibility to establish protection and support measures based on the specific needs of each person. In fact, "Law 8/2021, of June 2, which reforms civil and procedural legislation to support people with disabilities in the exercise of their legal capacity", represents a paradigm shift in the consideration of these people within the judicial system, both in its civil and criminal aspects. One of the main novelties is that it ends with the consideration of legal incapacitation and that "representative" or "assistance" guardianships will be sought depending on the specific needs of the person.

With regard to people with a cognitive disability, caused by various etiologies, this new legal consideration establishes as an essential requirement that the Prosecutor who acts in this type of procedure request two types of reports: health and social. Neuropsychology professionals, as one of the figures that represent the health area, will be able to receive judicial requests about the description of mental disability and a significant increase in these requests for neuropsychological reports can be expected. The areas that should be covered by, at least, the expert reports (collected in the Doctrine of the State Attorney General's Office, instruction 3/2010, of November 29), are: a) mental illness or disability indicating its prognosis; b) the affectation in the intellectual and/or volitional capacities to govern the personal and patrimonial sphere; c) effects of the disease delimiting the functional skills: skills for independent living, legal-economic-administrative skills, skills on health, for the transport and handling of weapons in relation to the procedure itself, and contractual capacity.

Legislative changes conditions require adapting our work procedures to meet the requirements. People with mental disabilities constitute a huge group and we need specific evaluation procedures that allow knowing the mentioned aspects for the best advice and access to the judicial system.

Forensic neuropsychology has a primary responsibility to provide information based on scientifically-validated neuropsychological principles and clinical methodology that is pertinent to the forensic question. To date, there are growing studies assessing if the instruments used, are suitable to be used in the legal context. Therefore, the aim of this symposium is to present tools that meet acceptable scientific standards in the Court-room and discuss about the expecting emergent future of forensic neuropsychology.



Symposium

Neuropsychological Evaluation and Tasks Proposals to meet needs of the Legal Context

Julia C. Daugherty

The IDEAL Scale to Staging “Care Needs” in People with Dementia: The Spanish Validation Experience

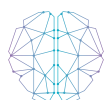
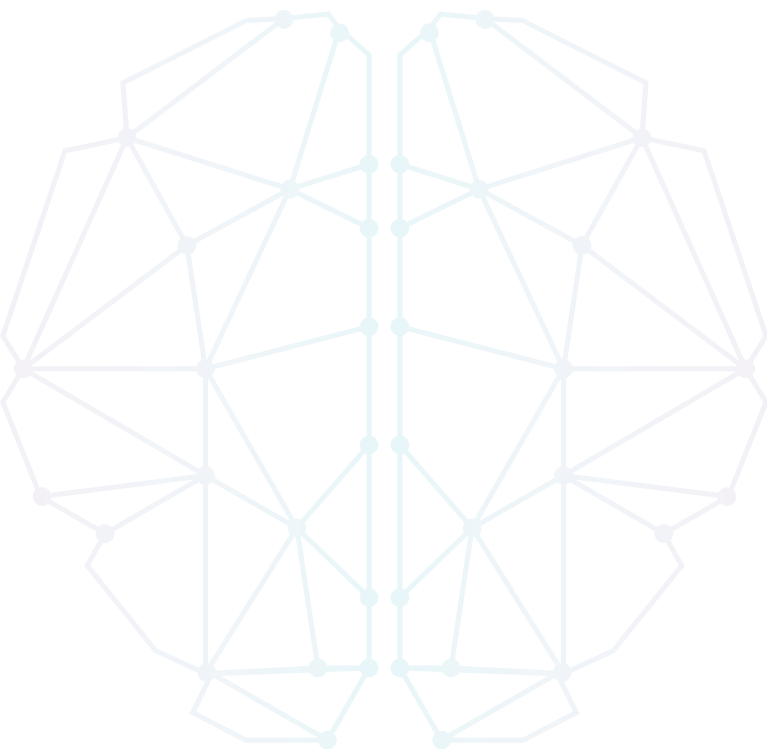
Raúl López Antón

Premorbid Intelligence Calibrated Norms: The Word Accentuation Test and Pseudo-Words Reading Subtest

Rocio Del Pino

Neuropsychological Evaluation and Tasks Proposals to meet needs of the Legal Context

Stefano Zago



Symposium

SYMPOSIA SPONSORED BY THE SPANISH CONSORCIO DE NEUROPSICOLOGÍA CLÍNICA

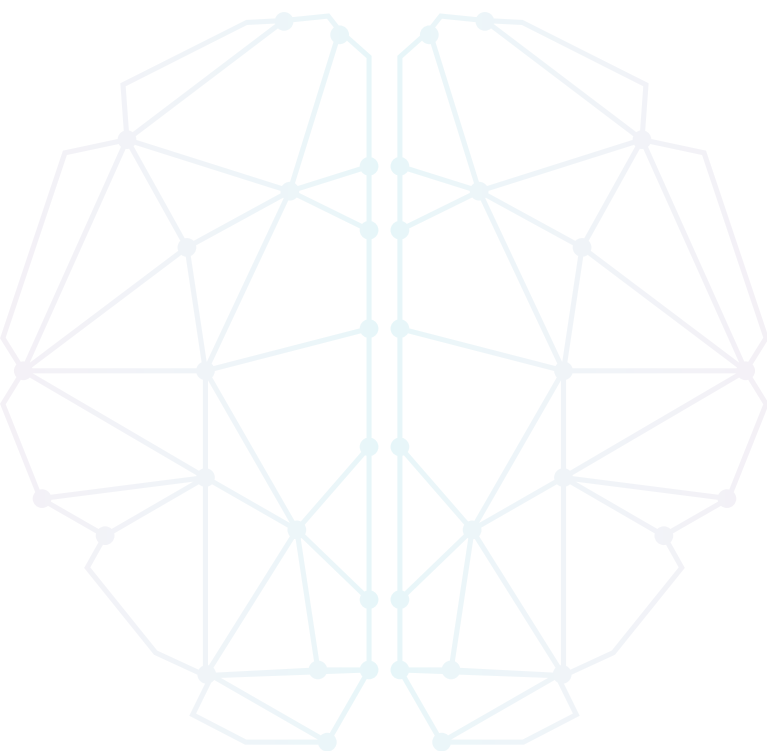
Detection, filiation, assessment, and treatment of visuoperceptive and visuospatial disorders in brain damage

Friday, July 8th, 10:00-11:30, AXA Auditorium

Chair:

Manuel Cid, Consorcio de Neuropsicología Clínica, Spain

SYMPOSIA SUMMARY



Symposium

Challenges and Advances in Cross-Cultural Neuropsychology in Europe

Friday, July 8th, 10:00-11:30, NH Constanza Hotel - Berlin Hall

Chair:

Inmaculada Ibanez-Casas, State University of New York at Plattsburgh, USA

SYMPOSIA SUMMARY

Neuropsychologists face new challenges as the world becomes more diverse. Most neuropsychological tests have been developed, validated, and normed in Western populations which leads to significant biases when applied to diverse populations. During the last decade, significant clinical and scientific research has been conducted to fill this gap. These issues are at the heart of the European Consortium on Cross-Cultural Neuropsychology (ECCroN) as illustrated by the talks presented by some members of ECCroN in this symposium. This symposium intends to address two important matters. First, we will clarify the challenges in the neuropsychological assessment of minority and ethnic groups and their implications for dementia diagnosis; Then, we will present advances in the development and validation of batteries or individual tests to assess neuropsychological performance in diverse populations. As a whole, the symposium will demonstrate ECCroN's commitment to developing a more cross-cultural approach to neuropsychology.

European Consortium on Cross-Cultural Neuropsychology (ECCroN)

Clara Calia

The Timely Diagnosis of Dementia in Minority Ethnic Groups in Europe (TIMING) Project

T. Rune Nielsen

Detection of Alzheimer's Disease in Multicultural Populations: What's new About the TNI-93 Memory test?

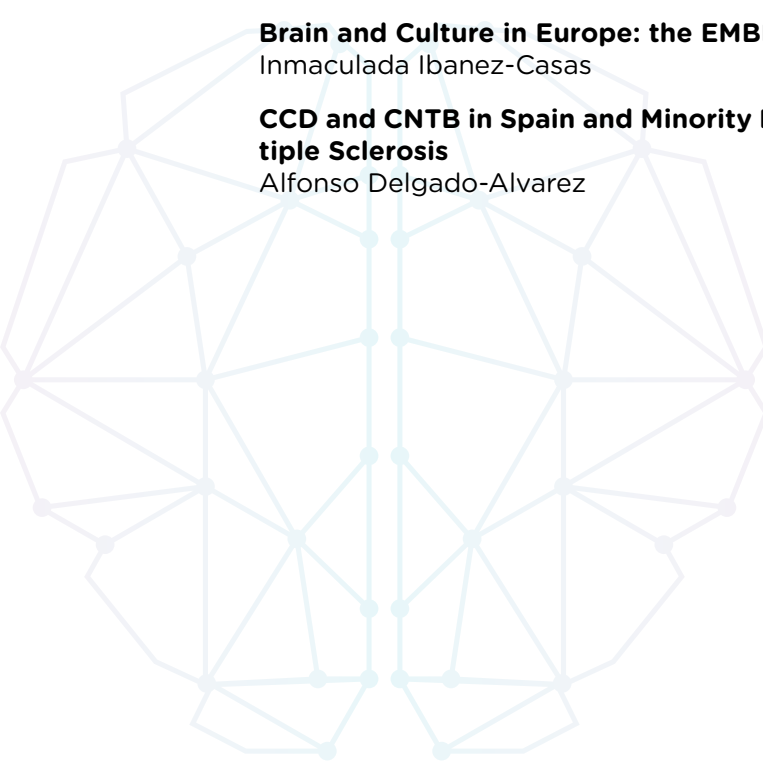
Pauline Narme

Brain and Culture in Europe: the EMBRACED Battery

Inmaculada Ibanez-Casas

CCD and CNTB in Spain and Minority Population in Alzheimer, Parkinson, and Multiple Sclerosis

Alfonso Delgado-Alvarez



SYMPOSIA SPONSORED BY THE FEDERATION OF EUROPEAN SOCIETIES OF NEUROPSYCHOLOGY (FESN)

The contribution of somatosensory deficits to different clinical phenomena

Friday, July 8th, 14:00-15:20, AXA Auditorium

Chair:

Hans-Otto Karnath, Tuebingen University, Germany

SYMPOSIA SUMMARY

The somatosensory system is important for many functions, such as tactile recognition, the perception of our body, and motor actions. Based on a comprehensive review of the human and animal literature on somatosensory processing over the past 10 years and a survey of the brain structures involved in somatosensation, we suggested a new model (de Haan& Dijkerman, 2020, TiCS, p529-541). Two main conclusions were put forward. First, somatosensation is involved in many separate subfunctions supported by highly interconnected networks. The model identifies basic somatosensory processing and five higher-order networks involved in haptic object recognition and memory, body perception, body ownership, affective processing, and action. Second, the nodes within these networks are often multimodal in nature. This multimodal quality emerges from an early stage onwards. For instance, the concept of body image is now conceptualized as a network of different cortical regions in the occipital (EBA), the inferior parietal cortex, and the posterior insula, and all of these areas are multimodal in nature.

An important consequence of these two hypotheses is that damage to the multitude of processing nodes within the highly interconnected networks in the somatosensory 'system' may play a role in many different clinical phenomena. Given that from an early stage onwards many of the processing nodes are multimodal, it follows that the repercussions of lesions may affect behaviour in different ways characterised by deficits in touch or proprioception, but that it is also possible to affect behaviour in more intricate fashion, such as in Autism or Gilles de la Tourette syndrome. In this symposium, we will explore this proposition in more detail.

Interacting Components of Body Perception in various Clinical Conditions

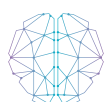
Chris Dijkerman

Somatosensory Delusion in Embodiment/Disembodiment Neuropsychological Syndromes

Anna Berti

Somatomotor Processing in Tourette Syndrome

Stephen Jackson



Scientific programme

Program at a glance

WEDNESDAY, July 6TH

| Time | AXA Auditorium | AXA Hall 1 | NH Constanza Hotel - Barcelona Hall | NH Constanza Hotel - Berlin Hall |
|---------------|--|---|--|--|
| 8:00-10:00h | Registration | | | |
| 9:00-12:00h | CE Workshop 1 Jon Evans "Neuropsychological rehabilitation for attention and executive functioning: evidence-based strategies" | CE Workshop 2 Skye McDonald "Social Cognition: How to intervene and what works" | CE Workshop 3 Melissa Lamar "Alzheimer's/Vascular Spectrum Dementia: Classification, Diagnosis, and Underlying Neuropathologies" | CE Workshop 4 Rune Nielsen "Neuropsychological Assessment and diagnosis in culturally diverse populations" |
| 12:00-13:00h | PLENARY KEYNOTE ADDRESS Til Wykes "Improving recovery in people with schizophrenia through cognitive remediation therapies" | | | |
| 13:00-14:00h | LUNCH BREAK | | | |
| 14:00-15:20h | SYMPOSIA 1 (Sponsored by the Spanish Federation of Neuropsychological Societies FANPSE) David Bartrés (Chair): "Brain Resilience and Maintenance in Advanced Age: Mechanisms and Study Frameworks" | PAPER SESSION 1 Interventions in TBI | PAPER SESSION 2 Factors related to healthy aging | PAPER SESSION 3 Neuropsychological Assessment & cultural related issues |
| 15:30-16:00h | Afternoon coffee break AND POSTERS SESSION 1 | | | |
| 16:00-16:30h | WELCOME CEREMONY | | | |
| 16:30- 17:30h | PRESIDENTIAL ADDRESS Ida Sue Baron "Anesthesia: A Wake-Up Call. Part 1. Lifespan Effects in Animals and Humans" | | | |
| 17:30- 18:00h | REMEMBERING MICHAEL CORBALLIS | | | |
| 18:00-19:30h | WELCOME COCKTAIL | | | |



THURSDAY, July 7TH

| Time | AXA Auditorium | AXA Hall 1 | NH Constanza Hotel - Barcelona Hall | NH Constanza Hotel - Berlin Hall |
|---------------|---|---|---|--|
| 8:30-9:50h | SYMPOSIA 2 (Sponsored by the INS-Special Interest Group NeuroCOVID) Jose A Muñoz-Moreno (Chair): “Cross-Cultural Considerations and Updated International Results” | PAPER SESSION 4 New approaches to Cognitive rehabilitation | PAPER SESSION 5 Assessment and treatment response in TBI | PAPER SESSION 6 Everyday memory failures and confabulation |
| 10:00-11:20h | SYMPOSIA 3 Jonh DeLuca (Chair): “Cognitive Rehabilitation and Neuroimaging in Clinical Populations” | PAPER SESSION 7 Infectious disorders and Neuropsychology: Covid and HIV | PAPER SESSION 8 Executive functions and control-inhibition | PAPER SESSION 9 Contributions of neurophysiological procedures to neuropsychological disorders |
| 11:30-12:00h | MORNING COFFEE BREAK + POSTERS SESSION 2 | | | |
| 12:00-13:00h | PLENARY KEYNOTE Chiara Nosarti “Brain and behaviour following very preterm birth” | | | |
| 13:00-14:00h | LUNCH BREAK | | | |
| 14:00-14:50h | PAPER SESSION 10 Neuropsychology of ADHD in childhood and adulthood | PAPER SESSION 11 Cultural and social aspects influencing neuropsychological assessment | PAPER SESSION 12 The role of cognitive, subjective and biological factors in TBI | PAPER SESSION 13 Stroke: cognitive and emotional consequences |
| 15:00-16:00h | PLENARY KEYNOTE Rafael Yuste “NeuroRights: Human Rights Guidelines for Neurotechnology” | | | |
| 16:00-16:30h | AFTERNOON COFFEE BREAK + POSTERS SESSION 3 | | | |
| 16:30-17:50h | SYMPOSIA 4 Elisa Di Rosa (Chair): “Negative affect and neurodegenerative diseases: Recent progress and future directions” | SYMPOSIA 5 Isaac Tourgeman (Chair): “The Utilization of Wearable and Passive Technology in the Monitoring of Mental and General Health Status” | INS AWARD FOR EARLY CAREER RESEARCH & INS ARTHUR BENTON AWARD FOR MID-CAREER RESEARCH | PAPER SESSION 14 Factors influencing cognitive deficits in schizophrenia |
| 18:00- 19:20h | SYMPOSIA 6 (Sponsored by Asociación Latinoamericana de Neuropsicología (ALAN) Mauricio García-Barrera (Chair): “Neuropsychological research in the Americas: From genes to brain, cognition, and everyday mental health” | PAPER SESSION 15 Cognitive and behavioural determinants of TBI | SYMPOSIA 7 INVITED (Sponsored by the INS Student Liaison Committee) “Impact of cultural diversity on neuropsychological assessment and rehabilitation” | PAPER SESSION 16 Neuropsychology of Epilepsy |



FRIDAY, July 8TH

| Time | AXA Auditorium | AXA Hall 1 | NH Constanza Hotel - Barcelona Hall | NH Constanza Hotel - Berlin Hall |
|---------------|---|--|--|--|
| 8:30-10:00h | SYMPOSIUM 8 (Sponsored by the INS Cultural Special Interest Group) Franchesca Arias (Chair), Claudia Jeannette Peñaloza (Co-chair): "Across cultures and languages: Neuropsychological assessment of patients with focal and neurodegenerative disease" | WORKSHOP (Sponsored by the INS Student Liaison Committee) "Premorbid estimates of cognitive abilities" | PAPER SESSION 17 Short term and long term Outcomes in TBI outcomes | SYMPOSIUM 9 Andrea Horta-Barba (Chair): "Neuropsychological Evaluation and Tasks Proposals to meet needs of the Legal Context" |
| 10:00-11:30h | SYMPOSIUM 10 (Sponsored by the Spanish Consorcio de Neuropsicología Clínica) Manuel Cid (Chair) Debate: "Detection, filiation, assessment and treatment of visuoperceptive and visuospatial disorders in brain damage" | PAPER SESSION 18 Novelty approaches to Neuropsychological assessment | PAPER SESSION 19 From MCI to Dementia: What's new | SYMPOSIUM 11 Inmaculada Ibáñez-Casas (chair): "Challenges and Advances in Cross-Cultural Neuropsychology in Europe" |
| 11:30-12:00h | MORNING COFFEE BREAK + POSTERS SESSION 4 | | | |
| 12:00-13:00h | PLENARY KEYNOTE Hans-Otto Karnath "Spatial neglect and the vestibular system" | | | |
| 13:00-14:00h | LUNCH BREAK | | | |
| 14:00-15:20h | SYMPOSIUM 12 (Sponsored by the Federation of European Societies of Neuropsychology, FESN) Hans-Otto (Chair): "The contribution of somatosensory deficits to different clinical phenomena" | PAPER SESSION 20 Assessment and Intervention in cognition in Schizophrenia | PAPER SESSION 21 Neurodevelopmental neuropsychology | PAPER SESSION 22 Cognition, biomarkers and dementia |
| 15:30-16:50h | PAPER SESSION 23 Management and clinical decisions following TBI | PAPER SESSION 24 Neuropsychiatry and cognition | PAPER SESSION 25 Factors influencing developmental disorders outcomes | PAPER SESSION 26 Movement Disorders and dementia |
| 17:00-17:30h | AFTERNOON COFFEE BREAK + POSTERS SESSION 5 | | | |
| 17:30-18:30h | PLENARY KEYNOTE Adam Brickman "Alzheimer's disease or Alzheimer's diseases? Contemporary classification and the role of white matter abnormalities" | | | |
| 18:30- 19:30h | AWARDS & CLOSING CEREMONY PAPERS AND POSTERS AWARDS CEREMONY | | | |



Scientific programme

Popular programme tracks at a glance

WEDNESDAY, July 6TH

| Time | AXA Auditorium | AXA Hall 1 | NH Constanza Hotel - Barcelona Hall | NH Constanza Hotel - Berlin Hall |
|---------------|--|-----------------|-------------------------------------|----------------------------------|
| 8:00-10:00h | Registration | | | |
| 9:00-12:00h | CE Workshop 1 | CE Workshop 2 | CE Workshop 3 | CE Workshop 4 |
| 12:00-13:00h | PLENARY KEYNOTE ADDRESS | | | |
| 13:00-14:00h | LUNCH BREAK | | | |
| 14:00-15:20h | SYMPOSIA 1 | PAPER SESSION 1 | PAPER SESSION 2 | PAPER SESSION 3 |
| 15:30-16:00h | Afternoon coffee break AND POSTERS SESSION 1 | | | |
| 16:00-16:30h | WELCOME CEREMONY | | | |
| 16:30- 17:30h | PRESIDENTIAL ADDRESS | | | |
| 17:30- 18:00h | REMEMBERING MICHAEL CORBALLIS | | | |
| 18:00-19:30h | WELCOME COCKTAIL | | | |

THURSDAY, July 7TH

| Time | AXA Auditorium | AXA Hall 1 | NH Constanza Hotel - Barcelona Hall | NH Constanza Hotel - Berlin Hall |
|---------------|--|------------------|---|----------------------------------|
| 8:30-9:50h | SYMPOSIA 2 | PAPER SESSION 4 | PAPER SESSION 5 | PAPER SESSION 6 |
| 10:00-11:20h | SYMPOSIA 3 | PAPER SESSION 7 | PAPER SESSION 8 | PAPER SESSION 9 |
| 11:30-12:00h | MORNING COFFEE BREAK + POSTERS SESSION 2 | | | |
| 12:00-13:00h | PLENARY KEYNOTE | | | |
| 13:00-14:00h | LUNCH BREAK | | | |
| 14:00-14:50h | PAPER SESSION 10 | PAPER SESSION 11 | PAPER SESSION 12 | PAPER SESSION 13 |
| 15:00-16:00h | PLENARY KEYNOTE | | | |
| 16:00-16:30h | AFTERNOON COFFEE BREAK + POSTERS SESSION 3 | | | |
| 16:30-17:50h | SYMPOSIA 4 | SYMPOSIA 5 | INS AWARD FOR EARLY CAREER RESEARCH & INS ARTHUR BENTON AWARD FOR MID-CAREER RESEARCH | PAPER SESSION 14 |
| 18:00- 19:20h | SYMPOSIA 6 | PAPER SESSION 15 | SYMPOSIA 7 INVITED | PAPER SESSION 16 |

FRIDAY, July 8TH

| Time | AXA Auditorium | AXA Hall 1 | NH Constanza Hotel - Barcelona Hall | NH Constanza Hotel - Berlin Hall |
|---------------|--|------------------|-------------------------------------|----------------------------------|
| 8:30-10:00h | SYMPOSIA 8 | WORKSHOP | PAPER SESSION 17 | SYMPOSIA 9 |
| 10:00-11:30h | SYMPOSIA 10 | PAPER SESSION 18 | PAPER SESSION 19 | SYMPOSIA 11 |
| 11:30-12:00h | MORNING COFFEE BREAK + POSTERS SESSION 4 | | | |
| 12:00-13:00h | PLENARY KEYNOTE | | | |
| 13:00-14:00h | LUNCH BREAK | | | |
| 14:00-15:20h | SYMPOSIA 12 | PAPER SESSION 20 | PAPER SESSION 21 | PAPER SESSION 22 |
| 15:30-16:50h | PAPER SESSION 23 | PAPER SESSION 24 | PAPER SESSION 25 | PAPER SESSION 26 |
| 17:00-17:30h | AFTERNOON COFFEE BREAK + POSTERS SESSION 5 | | | |
| 17:30-18:30h | PLENARY KEYNOTE | | | |
| 18:30- 19:30h | AWARDS & CLOSING CEREMONY PAPERS AND POSTERS AWARDS CEREMONY | | | |



Detailed Programme

WEDNESDAY, July 6th

8:00-10:00h Registration

9:00-12:00h AXA Auditorium - **CE Workshop 1** Jon Evans “Neuropsychological rehabilitation for attention and executive functioning: evidencebased strategies”

AXA Hall 1 - **CE Workshop 2** Skye McDonald “Social Cognition: How to intervene and what works”

NH Constanza Hotel - Barcelona Hall - **CE Workshop 3** Melissa Lamar “Alzheimer’s/Vascular Spectrum Dementia: Classification, Diagnosis, and Underlying Neuropathologies”

NH Constanza Hotel - Berlin Hall - **CE Workshop 4** Rune Nielsen “Neuropsychological Assessment and diagnosis in culturally diverse populations”

12:00-13:00h **PLENARY KEYNOTE ADDRESS**

Til Wykes “Improving recovery in people with schizophrenia through cognitive remediation therapies”

13:00-14:00h **LUNCH BREAK**

14:00-15:20h **SYMPOSIA 1:** Brain Resilience and Maintenance in Advanced Age: Mechanisms and Study Frameworks

Sponsored by the Spanish Federation of Neuropsychological Societies FANPSE

Chair: David Bartrés

Can the way we think affect our cognitive and brain health?

Natalie L. Marchant

Resilience and resistance to Alzheimer’s disease: mental health and lifestyle in people at increased risk for cognitive decline

Eider M. Arenaza-Urquijo

Brain maintenance in aging - current status and future prospects

Lars Nyberg

Non-invasive brain stimulation to characterize and enhance brain resilience

David Bartrés-Faz

PAPER SESION 1 Interventions in TBI (AXA Hall 1)

Managing Agitation During Early Recovery Following Traumatic Brain Injury: A Clinician Perspective

Sarah Carrier, Jennie Ponsford, Adam McKay

A Short Add-On Sleep Intervention in the Rehabilitation of Individuals with Acquired Brain Injury: A RCT

Louise Pilon, Nikita Frankenmolen, Janna van der Zijpp, Dirk Bertens

Non-Pharmacological Interventions for Agitation During Early TBI Recovery: A Systematic Review

Sarah Carrier, Jennie Ponsford, Ruby Phyland, Amelia Hicks, Adam McKay

Two Methods of Providing Behavioural Activation in Acquired Brain Injury: A Randomised Pilot Feasibility Trial

Andrea Kusec, Fionnuala C. Murphy, Polly V. Peers, Verity Smith, Ron Bennett, Estela Carmona, Aleksandra Korbacz, Cara Lawrence, Emma Cameron, Andrew Bateman



Detailed Programme

PAPER SESSION 2 Factors related to healthy aging (NH Constanza Hotel – Barcelona Hall)

Cognition and Brain Connectivity in Highly Cognitively Active Older Individuals. The NEUROPREVENT Project

Javier Oltra-Cucarella, Clara Iñesta Carrizosa, Beatriz Bonete-López, Esther Sitges-Maciá

Psychological Well-Being and Salivary Markers of Inflammation: The Moderating Effect of Age

Sung-Ha Lee, Jeanyung Chey, Woo-Young Ahn, Choong-Wan Woo, Yoosik Youm, Hairin Kim, Naeun Oh, Hyeyoung Park, Suhwan Gim, Eunjin Lee, Incheol Choi

Validation Study of the Korean version of Harmonized Cognitive Assessment Protocol (K-HCAP)

Jeanyung Chey, Dasom Lee, Seyul Kwak, Jinkook Lee

English language proficiency & use as related to subjective cognitive decline & MCI in native Spanish speakers

Melissa Lamar, Wassim Tarraf, Benson Wu, Jianwen Cai, Richard Lipton, Maria Llabre, Mayra Estrella, Linda Gallo, Martha Daviglus, Hector Gonzalez

Cognitive impairment indicator for the CLSA: Incorporating reliable change indices and a base rates

Megan E O'Connell, Helena Kadlec, Taler Vanessa, Kristina Gicas, Lauren E Griffith, Christina Wolfson, Susan Kirkland, Parminder Raina

PAPER SESSION 3 Neuropsychological Assessment & cultural related issues (NH Constanza Hotel – Berlin Hall)

Neuropsychological Data Networking on an International Scale

Robert Bilder, Russell Bauer, Daniel Drane, David Loring, Laura Glass Umfleet, Dustin Wahlstrom, Keith Widaman, Steven Reise, Max Mansolf, Kristen Enriquez, Lucia Cavanagh, Nelson Freimer, Annabel Vreeker

Towards an internationally-adapted new assessment of rapid forgetting for possible early detection of dementia

Ashok Jansari, Terry McGibbon, Jwala Narayanan, Ernest Tyberski, Claudia Pulcini, Chebat Andrea

Moroccan Arabic Norms for Name Agreement, Frequency, Imageability, Visual Complexity, and Age of Acquisition

Youssef Rami, Samir Diouny, Mohamed Yeou, Najib Kissani

Cognitive Constructs: Age and Education Effects

Shinta Estri Wahyuningrum, Augustina Sulastri, Indonesian NP Consortium, Gilles van Luijtelaar, Marc P. Hendriks

15:30-16:00h Afternoon coffee break + POSTERS SESSION 1

POSTERS SESSION 1

Association Between Perceived Injustice and Psychological Outcome in a Litigating, Mixed-Severity TBI Sample

Mitchell Byrne, Jennifer Batchelor, Nicholas W. G. Murray, Susanne Meares, E. Arthur

Predicting TOMM Performance in a Sample of American War Veterans

Sofía López-Vallejo, Hinza Batool Malik, Kayla Blaire Miller, Carlos Burneo-Garcés, Antonio E. Puente



Detailed Programme

When Things are not what they seem: Delusional Misidentification Syndromes in a Sample of Patients with ABI

David De Noreña, Juan Pablo Romero, Ana Bravo, Marcos Ríos-Lago

Spontaneous Memory Strategy Use in Acquired Brain Injury: the Role of Memory Functioning and Cognitive Reserve

Nikita Frankenmolen, Edo Grevers, Nienke Maas, Dirk Bertens, Joukje Oosterman

Intensive Treatment in Patients with Chronic Stroke to Increase the Acceptance and use of the Affected Arm

Belén Laureano Rico, María Navarro Miras, María del Carmen Martínez Cortés, Velasco Collado Yael Nelea, Jonathan Ladson

Cognitive Complaints and Cognitive Impairments in Elderly Patients with mild Traumatic Brain Injury

N. S. Thuss, S. E. Rakers, J. M. Spikman, J. van der Naalt

Case Study - Frontotemporal Lobe Impact During Boulder Detonation

Steve Tutty

Enriched Music-Supported Therapy in the Rehabilitation of Patients with Chronic Stroke

Emma Segura, Jennifer Grau-Sánchez, David Sanchez-Pinsach, Myriam De la Cruz-Puebla, Esther Duarte, Josep Lluís Arcos, Antoni Rodríguez-Fornells

CMSE: The Applicability of a Neuropsychological Screening Tool for Patients with Acute TBI.

Ting-Li Wang, Hooi-See Gan, Nai-Wen Guo, Ching-Wen Su, Ching-Hua Shen, Bei-Yi Su

Reduced Physical Activity in Paediatric Brain Injury and Neurological Conditions

Alexander Marsh, Nathan Simmonds-Buckley, Alex Tapping, Sophie Thomas, Kiren Sandhu, Ingram Wright

A Case Report of Long-Term Effects of Delayed Post-Hypoxic Leukoencephalopathy (DPHL) Following Drug Overdose

Jared Hammond, Jennifer Peraza, Christopher Pierce

Neural Correlates of Impaired Self Awareness of Deficits after Acquired Brain Injury: a Systematic Review

Anneke Terneusen, Ieke Winkens, Caroline Van Heugten, Sven Stapert, Heidi Jacobs, Rudolf Ponds, Conny Quaedflieg

The Many Faces of Stigma After Acquired Brain Injury: A Systematic Review

Maria Bracho, Christian Salas

Failure to Falsify contributes to the Replication Crisis in the Clinical Neurosciences

Frank Hillary

Establishing ground truth in TBI research: if replication is the answer, then what are the questions?

Frank Hillary, Sarah Rajtmajer, Diana Priestley, Jason Staph

Impaired Delayed Verbal Recall one week After Learning in Children After Mild Traumatic Brain Injury

Martina Studer, Sandra Bigi, Karen Lidzba

Elevated neurobehavioral symptoms detected in subconcussive injuries in Spanish-speakers

Denise Krch, Anthony H. Lequerica, Juan Carlos Arango-Lasprilla, John D. Corrigan

Effect of Cognitive Reserve on Attention and Processing Speed in Healthy Aging

Marta Molins-Sauri, Olga Bruna-Rabassa, Carmen García-Sánchez



Detailed Programme

Cognitive Changes in Healthy Older After Virtual Museums as Cognitive Stimulation Tool

Juan José Valdiviezo, Karen Arianne Vera Aguilar, Liliana Pacheco Zavala, Ingrid Mariella Carranza Cardiel, Maura Jazmín Ramírez Flores

Loneliness: associated factors, predictors and risk groups. Poblational study..

Montejo Pedro, Prada Crespo David, Santamaría Parra Lucía, Montejo Rubio Christian, Sanchez Ferrer Carlos, García Marín Jorge, Martín Medina Eva, Montenegro-Peña Mercedes

Loneliness in people with mild cognitive impairment: personality, cognitive performance and health

David Prada Crespo, Mercedes Montenegro-Peña, Pedro Montejo Carrasco, Carmen Diaz-Mardomingo, Lucía Santamaría Parra, Encarnación García Mulero, María Emiliana Andrés Montes, Edwin Castiblanco-Piñeros

A randomized controlled trial with the UMAM method of cognitive training

Mercedes Montenegro-Peña, Pedro Montejo, David Prada Crespo, M Emiliana Andres Montes, Ana Isabel Reinoso García, Antonio García Marín, Montserrat Lozano Ibañez

Cross-Cultural Variables and Computerization on Neuropsychological Test Performance among Young-old Adults

Hjalmar Zambrana-Bonaparte, Inmaculada Ibanez-Casas, Antonio Puente

"I'm not wearing that!" Avoiding Stigma While Sustaining Safe Community Independence.

J. Braxton Suffield

Should function in daily life activities be included as an early predictor of Alzheimer's disease?

Alexandra Vik, Marek Kocinski, Ingrid Rye, Astri J. Lundervold, Alexander S. Lundervold

Effects of the consumption of anthocyanins and flavanols in adults, POLYAGE Study.

Verónica Puertas Martín, Joaquín García Cordero, Alicia Pino, Constanza Cuevas, Ricardo San Román, Sonia De Pascual-Tereas

Associations Between the Oxford Digital Multiple Errands Test and Broad Functional Outcomes in Subacute Stroke

Sam Webb, Nele Demeyere

Validation of the Oxford Cognitive Screen-Plus in UK-based English-speaking Subacute and Chronic Stroke

Sam Webb, Rebecca Roberts, Evangeline Grace Chiu, Georgina Hobden, Sarah King, Emma Garratt, Nele Demeyere

Cognitive Tests For Older Adults with low Literacy Levels: in Search of the Ideal Cognitive Screening Protocol

Unai Diaz-Orueta, Isabel Pellicer-Espinosa

Does Phonemic Fluency rely Primarily on a Switching Strategy and Semantic Fluency on a Clustering Strategy?

Odelia Elkana, Shirley Hackmon, Ilor Vardi, Elissa L. Ash

The Methodology of Cross-Cultural Evaluations for Social Cognition: A Systematic Review

Renelle Bourdage, Dr. Pauline Narme, Sanne Franzen, Dr. Janne Papma



Detailed Programme

Long-term recognition-memory as a progression predictor from mild cognitive impairment to dementia.

Brenda Montañés-Masias, Maribel Martínez-Prats, Mariagiovanna Caprara, Jordi Sánchez-Monteagudo, Judith Castro-Egea, Aleix Jorba-Chacón, Aina Pineda-Comellas, Yolanda Martínez-Ortega, Àurea Autet-Puig, Maria-Cruz Crespo-Maraver

Reliability and Validity of the Virtual Meeting Task

Amy C. Abelmann, Dirk Bertens, Inti A. Brazil, Luciano Fasotti, Roy P.C. Kessels

A results comparison between a new nonverbal screening test for cognitive impairment and dementia (TUGA)

Alexandre Machado

Test Barcelona Workstation

Josep Gómez Hernández, Jordi Peña-Casanova

Extended Spanish and Catalan Normative data of the Memory Binding Test in 2741 Volunteers from the ALFA Study

Lidia Canals-Gispert, Nina Gramunt-Fombuena, Juan Carlos Cejudo, Alba Cañas-Martínez, Anna Brugulat-Serrat, Carolina Minguillon, Karine Fauria, Juan Domingo Gispert, Oriol Grau-Rivera, Gonzalo Sánchez-Benavides

Development of Normative Data Based on a Qualitative Measure of Educational Level for the MUNS Scale

Alberto Luis Fernandez, Gabriel Jáuregui Arriondo, Maximiliano Folmer, Marcelo Vaiman, Gazul Rotela Leite, Julieta Castro Brunello

Development of Normative Data Based on a Quantitative Measure of Educational Level for the MUNS Scale

Alberto Luis Fernandez, Gabriel Jáuregui Arriondo, Maximiliano Folmer, Marcelo Vaiman, Gazul Rotela Leite, Julieta Castro Brunello

Reliability Study of the Abbreviated Version of the Luria's DNB-2 for Spanish Older Adults.

Patricia Alzola, Bárbara Buch, Bernardino Fernández-Calvo, Francisco Ramos, Israel Contador

Factor structure of the CNS VS cognitive test battery in healthy controls and primary brain tumor patients

Sander Boelders, Karin Gehring, Leonie Vogelsmeier, Elke Butterbrod

Emotion-Action Binding: Emotional Vocal Productions

Sélim Yahia Coll, Paola Milanese, Radek Ptak, Leonardo Ceravolo, Didier Grandjean

Signal Detection and Decisional Components Influence Electrophysiological Correlates of Recognition Memory

Stephan Schneider, Sélim Yahia Coll, Armin Schnider, Radek Ptak

Simple Action Planning Paves the Way to Higher-Order Cognition: a Neural Reuse Account of Mental Rotation

Naz Doganci, Giannina Rita Iannotti, Radek Ptak

The Right Cerebral Hemisphere is Dominant for the Updating Component of Working Memory

Emilie Marti, Naz Doganci, Alexia Bourgeois, Radek Ptak

Anatomical basis of disorientation after first-ever brain lesion

Alexandra Adam-Darque, Radek Ptak, Armin Schnider



Detailed Programme

Effects of immediate feedback on performance in a task measuring Orbitofrontal Reality Filtering

Alexandra Adam-Darque, Radek Ptak, Armin Schneider

Improving New Word Learning with High-Definition Transcranial Direct Current Stimulation

Camille Farcy, Adrian Guggisberg

Culturally Relevant Behavioral Screener for Mexican Language Parents:

Early Development

Glena Andrews, Ana Colunga-Marin

Gulf War Illness risk is associated with genetic and cytokine expression variability and pesticide exposures

Janet Coller, Jonathan Tuke, Emily Quinn, Lea Steele, Maxine Krengel, Maria Abreu, Kristina Aenlle, Nancy Klimas, Kimberly Sullivan

Self-Reported Sleep Quality and Cognitive Outcomes in US Veterans with Gulf War Illness

Charlotte JeanMichel, Alexa Friedman, Patricia Janulewicz, Timothy Heeren, Maxine Krengel, Rosemary Toomey, Emily Sisson, Julianne Dugas, Lea Steele, Nancy Klimas, Kimberly Sullivan

Performance Validity Testing in Alcohol-related Cognitive Disorders

Yvonne C.M. Rensen, Sandra H. Vos, Iris M. Aaftink, Roy P.C. Kessels

Absence of Effect of Exenatide on Cognition in Adults with Obesity, Ex-Smokers or Abstinent Alcohol Dependence

S Cañizares, K Herlinger, LJ Nestor, YY Ling, JN Pannekoek, M Al Lababidi, N Ertl, F Vanelli, P Chhibbar, E Guerrero-Hreins, S Akavarapu, A Hampshire, MR Munafò, AR Lingford-Hugues, DJ Nutt, AP Goldstone

Is Long-Term Cannabis Use Associated With a Decline in Executive Function?

Ana Aquino-Servín, Paola Fuentes-Claramonte, Noemi Hostalet, María Ángeles García-León, Ana Moreno-Alcázar, Lucila Barbosa, Begoña Gonzalvo, Laura Blanco, Diana Bachiller, Anna Romaguera, Carlos Roncero, Peter J. McKenna, Edith Pomarol-Clotet

Tobacco use among older persons in Uganda: Prevalence and Associated factors

Catherine Kyomuhendo, Isaac Ddumba, Fred Musiige

16:00-16:30h WELCOME CEREMONY

16:30- 17:30h PRESIDENTIAL ADDRESS

Ida Sue Baron "Anesthesia: A Wake-Up Call. Part 1. Lifespan Effects in Animals and Humans"

17:30- 18:00h REMEMBERING MICHAEL CORBALLIS

18:00-19:30h WELCOME COCKTAIL



Detailed Programme

THURSDAY, July 7TH

8:30-9:50h AXA Auditorium - **SYMPOSIA 2:** Cross-Cultural Considerations and Updated International Results

Sponsored by the INSSpecial Interest Group NeuroCOVID

Chair: Jose A Muñoz-Moreno

Inside Out and Upside Down: How COVID-19 Pandemic Has Been Affecting the Mental Health of Children and Youth

Theodore C.K. Cheung

Neurocognitive Rehabilitation of post- COVID-19 Patients: Review of international perspectives

Kalliopi Megari

Neurocognitive Profiles of Adult COVID-19 Long Haulers from a Multi-Center Health System in New York

Joanne Festa

Olfactory and Neurocognitive Function in Adult COVID-19 Survivors.

A Multi-Center Study Online

Emilia Łojek

Relevant Cross-Cultural Aspects in NeuroCOVID: Primary Considerations from the NeuroCOVID INS SIG

Jose A. Muñoz-Moreno

PAPER SESSION 4 New approaches to Cognitive rehabilitation (AXA Hall 1)

Cognitive Remediation & Personalized treatment with the NEAR method

Lindsay Brenugat, Aliénor Maître, Louise Pechaud, Brigitte Malangin, Bérangère Rigaut, Charlotte Danset-Alexandre, Mauricette Mendy, Isabelle Amado, Mona Moualla

A Usability Study of a Game-Supported Goal Management Training for Brain-Injured Individuals

Elise M. Verhoog, Roy P.C. Kessels, Dirk Bertens

Influence of Premorbid IQ on the MCT Efficacy: a Recent Onset Psychosis Study

A. Barajas, I. Cardona, R. López-Carrilero, E. Pousa, E. Grasa, M.L. Barrigon, E. Lorente-Rovira, I. Ruiz, F. González-Higueras, J. Cid, S. Ochoa

Evidence on Language Rehabilitation Combined with Online Exercises. A Pilot Study with BLAPP.

Alessandra Zoccali, María Garau, Roser Colome, Anna López-Sala

Dosage Matters in Prism Adaptation Treatment for Improving Spatial Neglect and Stroke Rehabilitation Outcome

Peii Chen, Devan Parrott, Kimberly Hreha, Robert Gillen, A.M. Barrett

PAPER SESSION 5 Assessment and treatment response in TBI

(NH Constanza Hotel - Barcelona Hall)

"Its Not Only The Injury But Also the Kind of Head." Factors Influencing Outcome after TBI

Jennie Ponsford, Marina Downing

Advances in the Use of Eye Tracking for Neurocognitive Assessment of TBI among U.S. Military Personnel

Mark Ettenhofer, Sarah Gimbel, Evelyn Cordero, Jenna Trotta, Lars Hungerford

A Qualitative Exploration of the Long-Term Journey After Traumatic Brain Injury

Jennie Ponsford, Aviva Lefkovits, Amelia Hicks, Marina Downing



Detailed Programme

Evaluation of a Novel Treatment for Persistent Post-Concussion Symptoms After Mild Traumatic Brain Injury

Jack V.K. Nguyen, Adam McKay, Jennie Ponsford, Katie Davies, Michael Makdissi, Sean P.A. Drummond, Jonathan Reyes, Jennifer Makovec Knight, Tess Peverill, James H. Brennan, Catherine Willmott

PAPER SESSION 6 Everyday memory failures and confabulation

(NH Constanza Hotel – Berlin Hall)

The Relationship among Prospective, Retrospective and Everyday Memory with Cognitive Failures

Sanjida Aktar, Fariea Bakul, Chhanda Karmaker

The Scottish Memory Aid Survey: What Memory Aids are Recommended for People With Dementia or MCI?

Jonathan Evans, Katie Ferrry, Sally McVicar

Cinderella Was Attacked by the Bad Wolf: Confabulations on Story Recall in Alcohol-Related Cognitive Disorders

Yvonne Rensen, Joukje Oosterman, Paul Eling, Roy Kessels

Neural correlates of confabulation: what we have learned so far

Valentina La Corte, François Stefanescu, Pascale Pradat-Diehl, Gianfranco Dalla Barba

10:00-11:20h AXA Auditorium - **SYMPOSIA 3** Cognitive Rehabilitation and Neuroimaging in Clinical Populations

Chair: John DeLuca

Cognitive rehabilitation and neuroimaging in TBI

Katiuscia Sacco

Cognition oriented treatments and neuroimaging in Aging & Dementia

Benjamin Hampstead

Cognitive rehabilitation and neuroimaging in MS

John DeLuca

Cognitive Rehabilitation and Neuroimaging in Schizophrenia

Agurne Sampedro

Discussant and Q&A

Natalia Ojeda

PAPER SESSION 7 Infectious disorders and Neuropsychology: Covid and HIV

(AXA Hall 1)

Neuropsychological Outcomes Among Children Living With HIV Presenting With New-Onset Seizures In Zambia

Lisa Kalungwana, Namwiya Musonda, Ifunanya Dallah, Izukanji Sikazwe, Gretchen Birbeck, David Bearden

The Role of Neuropsychology in HIV Cure

Jose A. Muñoz-Moreno

Post COVID-19 Fatigue: the Role of Cognition and Neuropsychiatric disorders

Marco Calabria, Carmen García-Sánchez, Nicholas Grunden, Catalina Pons, Juan Antonio Arroyo, Beatriz Gómez-Anson, María del Carmen Estévez García, Roberto Belvís, Noemí Morollón, Javier Vera Igual, Isabel Mur, Virginia Pomar, Pere Domingo



Detailed Programme

Cognitive Performance and Psychological Distress after ICU Discharge in Patients with Critical COVID-19

Roy P.C. Kessels, Harmke B. Duindam, Bram van den Borst, Peter Pickkers, Wilson F. Abdo

Is brain fog the same in Post-COVID-19 condition and Myalgic Encephalomyelitis/Chronic Fatigue Syndrome?

Naiara Azcue González, Juan Carlos Gomez Esteban, Marian Acera, Beatriz Tijero, Tamara Fernandez, Naia Ayo Mentxakatorre, Tomas Perez-Concha, Ane Murueta-Goyena, Jose Vicente Lafuente, Alvaro Prada, Adolfo Lopez de Munain, Guillermo Ruiz Irastorza, Laureano Ribacoba, Iñigo Gabilondo, Rocio Del Pino

PAPER SESSION 8 Executive functions and control-inhibition

(NH Constanza Hotel - Barcelona Hall)

The Role of the Frontal Aslant Tract in Executive Functions: a Quantitative Tractography Study

Maud Landers, Stephan Meesters, Wouter De Baene, Geert-Jan Rutten

Remote tele-assessment of executive functions: Adapting the Jansari assessment of Executive Functions, JEF®

Ashok Jansari, Andrea Chebat, Kim Clark, Rebecca Poz

Emotional Intelligence and Inhibitory Control in University Students

Pablo Del Pino Ferrer, María Teresa Daza González, Pamela Ruiz-Castañeda

Direct and indirect measures of executive functions in middle childhood

Laura Fernández García, Nahuel Gioiosa Maurino, Jessica Phillips-Silver, María Teresa Daza González

Impulsiveness Profile in a Chronic Eating Disorders Sample: Upps-P and Stroop Inhibition/Switching task

Esteve Montasell, Laura Blanco-Hinojo, Karla Ramirez, Anna Soler, Joan Deus

PAPER SESSION 9 Contributions of neurophysiological procedures to neuropsychological disorders (NH Constanza Hotel - Berlin Hall)

Electrophysiological Disruptions and Cerebrospinal Fluid Biomarkers in Mild Cognitive Impairment Patients

Anna Carnes-Vendrell, Gerard Piñol-Ripoll, Raquel Huerto, Nuria Tahan, Brenda Chino-Vilca, Inmaculada Concepción Rodríguez-Rojo, Lucia Torres, Pablo Cuesta, Fernando Maestu

Reward-processing in mTLE-UHS pre- and post-surgery: behavioral and neurophysiological correlates

Adrià Vilà-Balló, Myriam De la Cruz-Puebla, Diana López-Barroso, Júlia Miró, Jacint Sala-Padró, David Cucurell, Mercè Falip, Antoni Rodríguez-Fornells

Transauricular Vagus Nerve Stimulation in Patients With Disorders of Consciousness

Samuel Lopez Rodriguez, Myrtha O'Valle Rodriguez, Marta Gomez-Herranz, Estrella Mckenna Blanco, Maria Dolores Navarro Perez, Enrique Noé Sebastián, Alejandro Galvao Carmona

Brain Electrical Activity in Emotional Processing in Low-Risk Preterm-Born Adults

M. Acebo Garcia-Guerrero, Lexuri Fernández de Gamarra-Oca, Natalia Ojeda del Pozo, Begoña Loureiro, Andrea Sierra-Ibarbia, Javier Peña-Lasa, Naroa Ibarretxe Bilbao, Leire Zubiaurre-Elorza

11:30-12:00h MORNING COFFEE BREAK + POSTERS SESSION 2



POSTERS SESSION 2

Randomized clinical trial of INtegral Cognitive REMediation (INCREM) program for major depression

Muriel Vicent-Gil, Sara González-Simarro, Beatriz Raventós, Javier Vera, Eduardo D. Marín-Martínez, Carlota Sabaté-Cao, Josefina Pérez-Blanco, Dolors Puigdemont, Javier de Diego-Adeliño, Carlo Alemany, Jèssica Valverde, Maria Serra-Blasco, Narcís Cardoner, Maria J. Portella

Cognitive Rehabilitation Improves Postural Stability in Patients with Parkinson's Disease

Aida Arroyo-Ferrer, Yeray González-Zamorano, Francisco José Sánchez-Cuesta, Laura Valenzuela-López, Juan Pablo Romero

Virtual reality-based neuropsychological intervention in patients with mild cognitive impairment or dementia

Bárbara Gómez-Cáceres, Irene Cano-López, Marta Aliño, Maria José García-Rubio, Aránzazu Duque, Paula Martínez, Encarnación Rama, Mercedes Almela

Virtual Reality in Neuropsychological Intervention Programs for People with Intellectual Disabilities

M^a Carmen Hernández Santana, Eloy Almeida Fleitas, José Luis Rodríguez Blancas, Diego Cangas Moldes, Cristina Acosta Sánchez

The Efficacy of Errorless Learning and Goal Management Training in Parkinson's Disease

Fleur F. Budde, Roy P.C. Kessels, Dirk Bertens, Annelien Duits

Impact of Cognitive Intervention Program on Cortisol Awakening Response in Mild Cognitive Impairment

Vanesa Hidalgo, Alicia Salvador, Olga Gelonch, Marta Vancells, Neus Cano, Maite Garolera

Children with Cerebral Palsy Improve their Social Cognition After Completing a Home-Based Intervention

María García-Galant, Montse Blasco, Paula Moral-Salicrú, Alba Berenguer-González, Olga Laporta-Hoyos, Xavier Caldú, Júlia Ballester-Plané, Júlia Miralbell, Roser Pueyo

Core Executive Function Improvements in Children with Cerebral Palsy After a Home-Based Intervention

Montse Blasco, María García-Galant, Alba Berenguer-González, Paula Moral-Salicrú, Olga Laporta-Hoyos, Xavier Caldú, Júlia Miralbell, Júlia Ballester-Plané, Roser Pueyo

Approach-Avoidance Bias Modification Training for Excess Weight

Raquel González-González, Lucía Solier-López, Alfonso Caracuel, Manuel López-Morales, Raquel Vilar-López

Inhibitory Control Training for People with Excess Weight

Lucía Solier-López, Raquel González-González, Raquel Vilar-López, Carmen Flores Navarro-Pérez, Alfonso Caracuel

Feasibility and safety of a fully immersive virtual reality program in stroke patients: Preliminary data

Akyllina Despoti, Irini Patsaki, Georgia Roussou, Argyro Papathanasiou, Dimitra Tzoumi, Anna Alexandropoulou, Nikolaos Leventakis, Evangelos Giaglis, Nefeli Dimitriadi, Lefteris Karatzanos, Serafeim Nanas

Virtual Reality for Cognitive Enhancement in Elderly People. Preliminary Results.

Raquel Viejo-Sobera, Camino Montañés, Javier Llull, Marco Calabria, Elena M Marron



Detailed Programme

Online Rehabilitation Program for Conduction Aphasia With a Verbal Amnesic Disorder: A Case Study.

Erick Rueda-Valencia, Cristina Aguillón-Solís, Judith Salvador-Cruz

Cognitive Intervention Programs in Minors Belonging to Disadvantaged Contexts in Spain: A Systematic Review

Carmen García-Navarro, Rosalba Company-Córdoba, Antonio Sianes, Joaquín A. Ibáñez-Alfonso

Analysis of Some Aspects of Theory of Mind (TOM) During Picture-Based Discourse in Moroccan Patients with AD

Mohamed Taiebne

Relationship Between Personality and Cognition Among Caregivers

Jordina Muñoz Padrós, Maite Garolera, Anna Bartés Plans, Santiago Escoté Llobet, Antoni Casals Pascual, M. Teresa Romero, Joan Espauella Panicot, Quintí Foguet Boreu

The Global Deterioration Scale for Adults with Down Syndrome

Emili Rodríguez-Hidalgo, Susanna Esteba-Castillo, Javier García-Alba

Utility of Non-Graphomotor Visuoconstructional Tasks for Early Detection of Neurocognitive disorder

Rafaela Martins-Rodrigues, Égina Karoline Gonçalves da Fonsêca, Israel Contador, Luigi Trojano, Patricia Alzola, Bernardino Fernández-Calvo

Neuropsychological Phenotypes and Biomarkers in Alzheimer's Disease

María Pino-Roca, Elsa Puiggròs-Rubiol, Mikel Vicente-Pascual, Joan Durà-Miralles, Juan J. Hernández-Regadera, José L. Ayala-Navarrete, Jordi Batlle-Nadal, Alfons Moral-Pijaume

Multidisciplinary analysis for the diagnosis of Alzheimer based on fractal geometry

Edward Prada, Duwang Prada, Ara Cerquera, Manuel Mejía, Rubén Áviles, Javier Villamizar, Camilo Morantes, Fabián Rojas

Neuropsychological Assessment in LATE - A Case-Report

Escudero Infante Sara, Fernández González Susana, Balagué Marmaña Marta

The Association of Stressful Life Events with Alzheimer's Disease Biomarkers and Brain Integrity

Eleni Palpatzis, Muge Akinci, Gregory Operto, Marina Garcia-Prat, Mahnaz Shekari, Kaj Blennow, Henrik Zetterberg, Juan Domingo Gispert, Marc Suarez-Calvet, Cleofe Peña-Gomez, Oriol Grau-Rivera, Gonzalo Sanchez-Benavides, Eider M. Arenaza-Urquijo

NEURONORMA battery associations with cerebrospinal fluid biomarkers in the continuum of Alzheimer's disease

Greta García-Escobar, Albert Puig-Pijoan, Víctor Puente- Periz, Aida Fernández-Lebrero, Rosa Maria Manero, Irene Navalpotro- Gómez, Nuncia Boltes, Jordi Ortiz-Gil, Sara Carrillo-Molina, Dolores López-Villegas, Maria Teresa Abellán-Vidal, Maria Isabel Martínez-Casamitjana, Juanjo Hernández - Sánchez, Anna Padrós-Fluvià, Jordi Peña-Casanova, Gonzalo Sánchez-Benavides

Impact of Fatigue and Anxiety but not Depression on Health-Related Quality of Life in Parkinson's Disease

Itsasne Sanchez-Luengos, Olaia Lucas-Jiménez, Javier Peña, Natalia Ojeda, Juan Carlos Gómez-Esteban, María-Ángeles Gómez-Beldarrain, Raquel Vázquez-Picón, Nerea Foncela-Beti, Naroa Ibarretxe-Bilbao

An Individualized Program In A Patient With Logopenic Progressive Primary Aphasia During Covid-19 Pandemic

Mohamed Taiebne



Risk factors associated with Mild Cognitive Impairment. A Systematic Review and Meta-Analysis.

Alejandra Irene Galeana García, Judith Salvador Cruz

The Facial Emotions Discrimination Test for the Assessment of Frontotemporal Dementia

Jordi Juncà-Parella, Adrià Tort-Merino, Beatriz Bosch, Jaume Olives, Magdalena Castellví, Yolanda González-Romero, Guadalupe Fernández-Villullas, Oscar Ramos-Campoy, Anna Antonell, Albert Lladó, Mircea Balasa, Sergi Borrego-Écija, Raquel Sanchez-Valle

Graph analysis of verbal fluency test discriminate between presymptomatic FTD and normal controls

Patricia Alves Dias, Alazne Gabilondo, Mikel Tainta, Fermin Moreno, Adolfo López de Munain, Myriam Barandiaran

Is the cognitive profile of SARS-CoV infectious cases no confirmed different from confirmed case?

Carmen García-Sánchez, Marco Calabria, Nicholas Grunden, Catalina Pons, Juan Antonio Arroyo, Beatriz Gómez-Anson, Marina del Carmen Estévez García, Roberto Belvis, Noemí Morollón, Virginia Pomar, Isabel Mur, Pere Domingo

White matter abnormalities in COVID-19 patients with persistent hyposmia

Anna Campabadal, Núria Guillem, Javier Oltra, María A Botí, Roser Sala-Llonch, Gemma C Monté-Rubio, Gema Lledó, Paula García, Lorena Ramí, Bàrbara Segura, Raquel Sánchez-Valle, Carme Junqué

Long-COVID and declarative memory

Mar Ariza, Neus Cano, Barbara Segura, Jose Bernia, Ulises Cortes, Nautilus Project Collaborative Group Nautilus Project Collaborative Group8 , Maite Garolera3,7

Post-COVID syndrome and fibromyalgia, is cognition what they have in common?

Mar Ariza, Olga Gelonch, Neus Cano, Barbara Segura, Jose Bernia, Ulises Cortes, Nautilus Project Collaborative Group Nautilus Project Collaborative Group, Maite Garolera

Long-term impact of the COVID-19 on cognition: what is the role of the disease severity?

Neus Cano, Mar Ariza, Jose Bernia, Vanesa Arauso, Laura Sanchez, Barbara Segura, Ulises Cortes, Nautilus Project Collaborative Group Nautilus Project Collaborative Group, Maite Garolera

Cognitive and Affective Deficits in Covid-19 Patients. A Longitudinal Follow up.

Carlos Fernández-Fdez, Oriol Barrachina-Esteve, Guillem Navarra-Ventura, Anna Reverter, Alicia Anguita, Anna Reverter, Jordi Espinosa, Cristina Lafuente, Marta Rubio, Mónica Crosas, Carmen Vila, David Cánovas, Marta Godoy, Sol Fernández-Gonzalo, Jordi Estela, Mercè Jodar

Neurocognitive and Psychiatric Performance in People with Recent HIV/AIDS Diagnosis

Cristina Aguillon-Solis, Maricela Sandoval-Olivares, Judith Salvador-Cruz, Daniel Badillo-Arriaga, Ramiro López-Elizalde, Lucia A. Ledesma-Torres

Clinical Predictors Leading to Neuropsychological Impairment Following COVID-19 Infection

Marta Almeria, Juan Carlos Cejudo, Javier Sotoca, Joan Deus, Jerzy Krupinski



Objective and Subjective Cognitive Deficit in COVID-19 Critically Ill Survivors One Year After ICU Discharge

Marta Godoy-Gonzalez, Guillem Navarra-Ventura, Gemma Gomà Fernández, Candelaria De Haro López, Cristina Espinal Sacristan, Cristina Fortià Palahí, Natalia Ridao Sais, Nuria Miguel Rebanal, Laia Oliveras Furriols, Carles Subirà Cuyàs, Mercè Jodar Vicente, Leonardo Sarlabous Uranga, Rafael Fernández Fernández, Ana Ochagavía Calvo, Lluís Blanch Torra, Josefina López-Aguilar, Sol Fernandez-Gonzalo

Effects of Diagnosis Threat on Cognitive Complaints After COVID-19 Infection: Validation Study

Daniella Winter, Elad Omer, Yoram Braw

Perception of the neuropsychological impact of COVID-19

Veronica Franco, Demian Rodante, Nicolas Basin

Do Facial Expressions Yield Context-Dependent Effect in Times of COVID-19?

Simone Schwizer Ashkenazi, Eli Vakil

Out of the box: Cognition in autoimmune encephalitis does not conform to a common pattern

Sarah Griffith, Robb Wesselingh, James Broadley, Marie O'Shea, Chris Kyndt, Catherine Meade, Brian Long, Udaya Seneviratne, Natalie Reidy, Robert Bourke, Katherine Buzzard, Wendyl D'Souza, Richard Macdonell, Amy Brodtmann, Helmut Butzkueven, Terence O'Brien, Rubina Alpitsis, Charles Malpas, Mastura Monif

Autoimmune Encephalitis: A Multi-Modal Cognitive Disorder

Sarah Griffith, Robb Wesselingh, Tiffany Rushen, Marie O'Shea, Chris Kyndt, Catherine Meade, Udaya Seneviratne, Natalie Reidy, Amy Halliday, Katherine Buzzard, Tomas Kalincik, Wendyl D'Souza, Richard Macdonnell, Amy Brodtmann, Helmut Butzkueven, Terence O'Brien, Rubina Alpitsis, Charles Malpas, Mastura Monif

Neuropsychological Effects of Early Life Stressful Events in Recently Diagnosed Men with HIV Infection

Maria Àngels Ranchal, Anna Prats, Maite Garolera, Bonaventura Clotet, Jose A. Muñoz-Moreno

Cognitive Functioning of Children HIV-Exposed, Uninfected: Outcomes and Risk Factors

Julia Young, Jason Brophy, Lena Serghides, Ari Bitnun, Mary Lou Smith

Longitudinal Data Collection of Neurotoxicant Exposures and Health Symptoms in Gulf War Veterans.

Kathryn Price, Leah Orlinsky, Peter Rivoira, Clara Zundel, Kimberly Sullivan, Maxine Krengel

Toxic Wounds and Cognition in US Gulf War Veterans from the BBRAIN Repository Network

Dylan Keating, Maxine Krengel, Rosemary Toomey, Linda Chao, Layla Abdullah, Lea Steele, Patricia Janulewicz Lloyd, Timothy Heeren, Emily Quinn, Julianne Dugas, Kimberly Sullivan

Examining the Neurocognitive Effects of Perceived Stress upon Latinx People with HIV

Examining the Neurocognitive Effects of Perceived Stress upon Latinx People with HIV

Alexander Slaughter, Jordan Stiver, Micah Savin, Denise Oleas, Elizabeth Breen, Desiree Byrd, Jessica Robinson-Papp, Monica Rivera Mindt



Detailed Programme

Agenesis of the Corpus Callosum: Developmental Trajectories Through Adolescence

Glena Andrews, Kristin Eddy

Social Skills of Young People with Down Syndrome during COVID-19 Pandemic

Julia B. Barrón-Martínez, Judith Salvador-Cruz

Hemispheric Lateralization in Dyslexic and Typically Reading Children

Yiannis Metaxas

Neurocognitive Subtypes of Developmental Dyslexia

Maria Chalmpe, Elias Avramidis, Sotiria Tzivinikou

Cognitive Functioning of Adolescents who Experienced Childhood Maltreatment: Insights from Sensitive Periods

Catherine St-Pierre, Danielle Nadeau, Caroline East-Richard, Gaétan Daigle, Caroline Cellard

Adaptive Skills and Executive Function in Young people with Down Syndrome during COVID-19 Pandemic

Judith Salvador-Cruz, Julia B. Barrón-Martínez

Neuropsychological profile in children with congenital heart disease undergoing surgery in the neonatal period

Anna Solerdelcoll-Clapera, Saül Martínez-Horta, Anna López-Sala, Ivan Solà-Arnau, Anna Sans-Fitó

Cognitive Performance, Brain Volumetry and Blood Phenylalanine Levels in Adult Phenylketonuric Patients

Jèssica Pardo Ruiz, Bàrbara Segura Fàbregas, Adriana Pané Vila, Pedro Juan Moreno Lozano, Josep M. Grau Junyent, Carme Junqué Plaja

Psychometric Properties of the Argentinean Version of the Minilinguistic State Examination

Leticia Vivas, Macarena Martínez-Cuitiño, Laura Manoilloff, Nicolás Linares, Mónica Garavaglia, Daniela Andreotti, Lourdes Matar

Language-Specific Sites in the Supplementary Motor Area: Evidence from Electrical Stimulation Mapping

Mireia Hernández, Alba Gómez, Ruth Lau, Antoni Rodríguez-Fornells, Inmaculada Rico, Àngels Camins, Andreu Gabarrós

The Relations Between White Matter and Verbal Short-Term Memory in Post-Stroke Aphasia

Guillem Olive, Claudia Peñaloza, Lucía Vaquero, Matti Laine, Nadine Martin, Antoni Rodríguez-Fornells

Expressive and Receptive New Word Learning in Post-Stroke Aphasia

Lara Navarrete, Matti Laine, Antoni Rodríguez Fornells, Claudia Peñaloza

Influence of Bilingualism on Cognition of Patients With Expansive Brain Lesions on the Dominant Hemisphere

Anna Gasà-Roqué, Alejandro Fernández-Coello, Inmaculada Rico, Antoni Rodríguez-Fornells, Andreu Gabarrós

Intraoperative Neuropsychological Assessment During Awake Craniotomy in Aphasia Prevention

Agnieszka Olejnik, Aleksandra Bala, Tomasz Dziedzic, Andrzej Marchel

12:00-13:00h **PLENARY KEYNOTE** Chiara Nosarti “Brain and behaviour following very preterm birth”

13:00-14:00h **LUNCH BREAK**



Detailed Programme

PAPER SESSION 10 Neuropsychology of ADHD in childhood and adulthood

(AXA Auditorium)

Sensory and neurophysiological processing in infants with familial ADHD:

Lessons learned from a pilot study

Jennifer Keating, Nabil Hasshim, Jessica Bramham, Michelle Downes

Can the NIH Toolbox Executive Function Tests be Used to Diagnose ADHD in Children

Christopher Nicholls, Amber Schaeffer

ADHD During Perimenopause and Menopause

Jeanette Wasserstein, Mary Solanto, Gerry Stefanatos

Use of tDCS in Adult Patients with ADHD for the Improvement of Executive Functions and Emotional Regulation

Laura Steen García, Rosa Franco Jiménez, Joaquín A. Ibáñez Alfonso

Modulation of a Concurrent Visual Working Memory Task in Visual Search: a Neurodevelopmental Perspective

Maria Quiros-Godoy, Beatriz Gil-Gomez de Liano, Elena Perez-Hernandez

PAPER SESSION 11 Cultural and social aspects influencing neuropsychological assessment (AXA Hall 1)

Does native language impact the assessment of the executive abilities?

Christine Moroni, Juliette Palisson, Didier Maillet, Catherine Belin, Pauline Narme

Developing a Culture-Sensitive Survey on Attitudes Towards Neuropsychological Assessment: A Literature Review

Maria Pleshkevich, Kyle Pellerin, Inmaculada Ibanez-Casas, Zara Melikyan

The Association of Sociodemographic Factors with Total and Item-Level Semantic Fluency Metrics

Magdalena Beran, Emma L. Twait, Annelot P. Smit, Marleen Posthuma, Demi van Dijk, Katherinne M. Rabanal, Dayanara Rosado, Roxanna J. Flores, Carolyn L. Qian, Shana Samuel, Gelan Ying, Richard Mayeux, Nicole Schupf, Thomas T. van Sloten, Miranda T. Schram, Jennifer J. Manly, Mirjam I. Geerlings, Jet M.J. Vonk

Diagnostic Accuracy of Performance Validity Tests in Indonesia: Simulation Study in Undergraduate Students

Widhi Adhiatma, Marc P. H. Hendriks, Magdalena S. Halim, Roy P. C. Kessels

Assessing Social Cognition in Virtual Reality: Feasibility and Interest of REALSoCog in Pathology

Eva-Flore Msika, Nathalie Ehlrlé, Marc Verny, Bénédicte Dieudonné, Alexandre Gaston-Bellegarde, Eric Orriols, Pascale Piolino, Pauline Narme

PAPER SESSION 12 The role of cognitive, subjective and biological factors in TBI (NH Constanza Hotel - Barcelona Hall)

Contributions of Genetic Polymorphisms to Emotional Distress After Moderate-Severe Traumatic-Brain-Injury

Chloe Anderson, Jai Carmichael, Amelia Hicks, Jennie Ponsford

Client Experiences with Holistic Neuropsychological Rehabilitation: 'it is an Ongoing Process'

Anne-Fleur Domensino, Daan Verberne, Leyla Prince, Jessica Fish, Jill Winegardner, Andrew Bateman, Barbara Wilson, Rudolf Ponds, Caroline van Heugten



Detailed Programme

Accelerated Long-Term Forgetting in Patients After Acquired Brain Injury

Martina Studer, Dörthe Heinemann, Klemens Gutbrod, Katharina Henke, Adrian Guggisberg

Attention to Attention in Aphasia – Capturing Compromised Components and Contributing Correlates

Rahel Schumacher, Ajay D. Halai, Matthew A. Lambon Ralph

Mild Traumatic Brain Injury and Cognitive, Health and Emotional Symptoms in Gulf War Illness

Maxine Krengel, Kathryn Price, Leah Orlinsky Orlinsky, Peter Rivoira, Clara Zundel, Kimberly Sullivan

PAPER SESSION 13 Stroke: cognitive and emotional consequences

(NH Constanza Hotel – Berlin Hall)

Theta Oscillatory Activity Relating to Inhibitory Control Effort in Post-Stroke Children

Prisca Hsu, Cecilia Jobst, Nomazulu Dlamini, Douglas Cheyne

Negative Reward Captures Attention in the same way as Task-Relevance: a Study of Spatial Neglect

Alexia Bourgeois, Emilie Marti, Armin Schnider, Radek Ptak

Mental Health Service Access in Australian Survivors of Stroke: Contributing Factors and Long-Term Outcomes

Priscilla Tjokrowijoto, Renerus Stolwyk, David Ung, Monique Kilkenny, Joosup Kim, Lachlan Dalli, Dominique Cadilhac, Nadine Andrew

Differential Roles of Objective and Subjective Cognition to Depression and Activity Levels in Chronic Stroke

Andrea Kusec, Chloe Carrick, Pippa Watson, Evangeline Grace Chiu, Elise Milosevich, Bogna Drozdowska, Nele Demeyere

Long-Term Social Cognition and Behavior Problems After Subarachnoid Hemorrhage and the Effect on Participation

Lieke Jorna, Sara Khosdelazad, Sandra Rakers, Ralf Koffijberg, Rob Groen, Anne Buunk, Joke Spikman

15:00-16:00h PLENARY KEYNOTE Rafael Yuste “NeuroRights: Human Rights Guidelines for Neurotechnology”

16:00-16:30h AFTERNOON COFFEE BREAK + POSTERS SESSION 3

POSTERS SESSION 3

Self-Reported Executive Dysfunctions in Schizophrenia Patients Abusing Substances

Rune Raudeberg, Grant L. Iverson, Åsa Hammar

The Persian Version of the Screen for Cognitive Impairment in Psychiatry (SCIP-P) for Bipolar I Disorder

Galin Shirzad, Juana Gomez Benito, Oscar Pino, Georgina Guilera, Scott Purdon

Neurocognition in patients hospitalized in a subacute psychiatric unit

Ana Llorente, Encarna Zaldívar, Sheila López-Romeo, David Juanes, David Suárez, Sonia Quiñones, Elsa Quiñonero, Berta Vilaseca, Susana Mohino

Anterograde amnesia in Schizophrenia?: considerations about a case report

Irene Alonso Fernández, M^a Teresa Bobes Bascarán

Processing Speed as an Endophenotypic Marker in Patients with a First Episode of Psychosis and their Relatives

Ángel Yorca Ruiz, Sarah Berrocoso Cascallana, Rosa Ayesa-Arriola



Detailed Programme

Neuropsychological profiles in elderly people with Schizophrenia

Ana Escanilla Casal, María Cecilia Navarro Marfisis, Piotr Kolasa, Susana Ochoa Guerre, Belén Arranz Martí

Neuropsychological Functioning and Clinical Symptoms following Functional Neurosurgery in Refractory OCD

Garazi Laseca-Zaballa, Marcos Ríos-Lago, Genny Lubrini, Jose Antonio Periañez, Manuela Martín Bejarano, Cristina Torres-Díaz, Nuria Martínez Moreno, Juan Álvarez-Linera, Roberto Martínez Álvarez

Neuropsychiatric differences between asymptomatic and symptomatic carriers of Huntington's disease

María Angeles Acera, Miriam Turuelo, Tamara Fernández-Valle, Johanne Somme, Javier Ruíz-Martínez, Lara Pardina, Andrea Gabilondo, Beatriz Tijero, Marta Ruíz-López, Mar Carmona-Abellán, Ioana Croitoru, Iñigo Gabilondo, Juan Carlos Gómez-Esteban, Rocío Del Pino

Validity of the ACE III for the detection of cognitive impairment in people with psychosis in India.

P. Sulakshana Rao, Madhavi Rangaswamy, Aparna Dutt, Anirban Dutt, Jonathan Evans

Validation of a Culturally Neutral Prospective Memory Test in Healthy Adults & People with Psychosis in India

P. Sulakshana Rao, Madhavi Rangaswamy, Jonathan Evans, Anirban Dutt

Memory deficits in children and adolescents with psychotic disorders: A systematic review and meta-analysis

Patricia Díaz-Carracedo, Pilar de la Higuera-González, Geraldine Padilla, Elisa Rodríguez-Toscano, Alejandro de la Torre-Luque

Strength of functional connectivity between regions implicated in perspective-taking

Aditi Arora, Soha Saleh, Michael Dacanay, Jacob Gronemeyer, Helen M Genova

Determinants of Cognitive Problems in Major Depression

Yolanda Sánchez-Carro, María J. Portella, Itziar Leal-Leturia, Pilar Álvarez, Virginia Soria, Pilar López-García

Cognitive Performance in Patients with Major Depressive Disorder is Related to their Immunometabolic Status

Yolanda Sánchez-Carro, Alejandro de la Torre-Luque, María J. Portella, Itziar Leal-Leturia, Pilar Álvarez, Virginia Soria, Pilar López-García

Cognitive Flexibility and Mind-Wandering: Different Profiles in Anxiety?

Isabelle Kaiko, Jemma Todd, Caroline Hunt, Muireann Irish

Poor Executive Function and Mortality in Advanced Chronic Kidney Disease Patients in Hemodialysis

Ester Gonzalez-Aguado, Sol Otero, Itziar Navarro, Carlos Soto, Fabiola Dapena, Carme Tayó, Isabel Collado

Role of Sarcopenia in Cognitive Function in Patients with Morbid Obesity Before Bariatric Surgery

Laura Casas, Andreu Simó-Servat, Montse Ibarra, Mireia Libran, Judith Castejón, María José Barahona

Brain Functional Connectivity Alterations Related to Fatigue in Post-COVID Condition

María Díez-Cirarda, Miguel Yus, Cristina Delgado-Alonso, Natividad Gomez-Ruiz, Carmen Polidura, Juan Arrazola, Manuela Jorquera, Lidia Gil-Martinez, María Valles-Salgado, Jorge Matias-Guiu, Jordi A Matias-Guiu



Detailed Programme

Cognitive Impairment in Patients with Post-COVID Condition

Maria Diez-Cirarda, Cristina Delgado-Alonso, Maria Valles-Salgado, Alfonso Delgado-Álvarez, Miguel Yus, Natividad Gómez-Ruiz, Manuela Jorquera, Carmen Polidura, Maria Jose Gil, Alberto Marcos, Jorge Matias-Guiu, Jordi A. Matias-Guiu

Towards a (Neuro)psychological Toolbox for Brain Surgery Aftercare

Joanna Sierpowska, Claudia Peñaloza, Vitória Piai

Cognitive impairment associated with Multiple chemical sensitivity syndrome

Soledad Ribas López, José Ángel Rubiño Díaz

How do Patients Tolerate Brain Stimulation During Awake Craniotomy Procedure?

Aleksandra Bala, Agnieszka Olejnik, Tomasz Dziedzic, Andrzej Marchel

Attention and Working Memory in Patients with Prolactin Secreting Pituitary Tumors

Aleksandra Bala, Agnieszka Olejnik, Tomasz Dziedzic, Andrzej Marchel

Long-Term Neuropsychological Deficits Among Hospitalized COVID-19 Patients

Isabel Jiménez-Martín, María Jesús Domínguez-Santalla, Alba Regueira-Castro, Samantha Barros-Rodrigues, José Manuel Aldrey-Vázquez, Susana Arias-Rivas, Lucía Moure-Rodríguez, Francisco Caamano-Isorna, Montserrat Corral-Varela

Neuropsychological deficits in children with congenital hydrocephalus: a systematic review

Maria José García-Rubio, Marta Aliño, Irene Cano-López, Pilar Chisbert-Genovés, Luis Moreno-Oliveras, Aránzazu Duque, Encarnación Rama, Mercedes Almela, Paula Martínez, José Piquer-Belloch, Sara Puig-Pérez

Laboratory Predictors of Neuropsychological Functioning in Sickle Cell Disease

Andrew Heitzer, Jennifer Longoria, Victoria Okholina, Guolian Kang, Jane Hankins

Neuropsychological Profile Associated to PKAN

Ana Belén Vintimilla-Tosi, Joaquín A. Ibáñez Alfonso, David Saldaña

In Search of a Neuropsychological Profile for Migraine: a Systematic Review

Shannon Richardson, Unai Diaz-Orueta

Executive Function is Impaired and Linked to Gut Microbiota in Patients with Irritable Bowel Syndrome.

Tina Emilie Johnsen, Eline Margrete Randulff, Astri J. Lundervold

Virtual-reality data-driven phenotypes of Attention-Deficit/Hyperactivity Disorder

Pilar Fernández-Martín, Rocío Rodríguez-Herrera, Rosa Cánovas López, Unai Díaz-Orueta, Alma Martínez de Salazar Arboleas, Pilar Flores Cubos

Association of Hypertension to Brain Structure and Depression in Persons with Multiple Sclerosis

Cristina A. F. Román, Dede Ukueberuwa O'Shea, Gray Vargas, Peter A. Arnett

Executive and memory functions in adults with sickle cell disease

Hugo Bismuth, Despina Messimeris, Clémentine Emaer, Corentin Provost, David Calvet, Pauline Narme

Music Cognition in Children and Adolescents with Williams Syndrome

Nara Andrade, Emma Otta

Neuropsychological Profile of a Cohort of Children with Inborn Errors of Metabolism

Marta Gil González, Roser Colomé Roura, M^a Àngels Garcia Cazorla

Neurocognitive Impairment in Inborn Errors of Metabolism: Systematic Review

Marta Gil González, Roser Colomé Roura, M^a Àngels Garcia Cazorla

Is Cognitive Functioning Discussed with Brain Tumour Patients during Presurgical Decision Making?

I.J.M. Bras, G.J. Rutten¹, I.J.M. Vugt, M.C.W. Joosen, A.P.Y. Hoogendoorn, M.M. Sitskoorn, K. Gehring



Detailed Programme

Neuropsychological profile associated with breast cancer survival: a systematic review

Marta Aliño, Irene Cano-López, Maria José García-Rubio, Aránzazu Duque, Paula Martínez, Encarnación Rama, Mercedes Almela, Pilar Moreno, Sara Puig-Pérez

Associations Between Cognitive Functioning, Coping and Depressive Complaints in Low-Grade Glioma Patients

Floor Gelmers, Femke Siebenga, Sandra Rakers, Jacoba Spikman, Anne Buunk

Neurocognitive Decline in Patients with 4-20 Brain Metastases Treated with Stereotactic Radiosurgery

Catherine Sullaway, Jing Li, Erik Sulman, Todd Pezzi, Kyle Noll, Cristina Tortarolo, Jeffrey Wefel

Long-Term Cognitive Safety of CAR T-Cell Treatments

Catherine Belin, Didier Maillet, Christine Moroni, Renata Ursu, Stefania Cuzzubbo, Roberta Di Blasi, Christophe Carreau, Catherine Thieblemont, Antoine Carpentier

Higher-Order Cognitive Functions in Low-Grade Glioma Patients

Femke F. Siebenga, Floor Gelmers, Sandra E. Rakers, Jacoba M. Spikman, Anne M. Buunk

Emotion Recognition in Low-Grade Glioma Patients Before and After Surgery

Anne M. Buunk, Marleen Gerritsen, Jacoba M. Spikman

Descriptive Study of Knowledge About Epilepsy in People with Epilepsy

Álvaro Prieto, Emilio Verche

Sleep disorders and executive functions in people with epilepsy

Paula Muñoz Fernández, Mariana Elena Cairós González

Impairments in the Theory of Mind in Patients with Epilepsy: Systematic Review and Meta-analysis

Ian David Rodríguez-Razo, Roberto Peña-Escamilla, Judith Salvador-Cruz

Learning Capacity Distinguishes Impairment in Patients with Stereo-EEG Confirmed FLE and TLE

Nicholas Murray, Mitchell Byrne, Anthony Kneebone, Lisa Gillinder, Petra Graham, Greg Savage

16:30-17:50h AXA Auditorium - **SYMPOSIUM 4** Negative affect and neurodegenerative diseases: Recent progress and future directions
Chair: Elisa Di Rosa

Negative affect in Parkinson's disease: evidence from the COVID-19 pandemic
Elisa Di Rosa

Are affective disorders the first symptoms of cognitive impairment? Evidence in a sample of elderly outpatient
Alberto Sardella

Exploring state and trait markers of Impulsive Compulsive Behaviors in Parkinson's
Nicky Edelstyn

Dancing and music therapy to improve well-being and depression in Parkinson's Disease
Annelien Duits

16:30-17:50h AXA Hall 1 - **SYMPOSIUM 5** The Utilization of Wearable and Passive Technology in the Monitoring of Mental and General Health Status
Chair: Isaac Tourgeman



Detailed Programme

The Viability of Utilizing Wearable Technology for Digital Phenotyping

Jessica Frias

Public Opinions on Wearable Technology

Brooks Peterson

The Utility of Passive and Portable Sensor Data for Monitoring the Symptomatology of Depression and Anxiety

Dayron Gonzalez

Relationship Between the Methods of Monitoring Cardiovascular Disease and Mental Health

Stanley Chen

16:30-17:50h INS AWARD FOR EARLY CAREER RESEARCH & INS ARTHUR BENTON AWARD FOR MIDCAREER RESEARCH

PAPER SESSION 14 Factors influencing cognitive deficits in schizophrenia (NH Constanza Hotel – Berlin Hall)

The Contributions of Foreground and Background Reward Sensitivity to Apathy after Traumatic Brain Injury

Halle Quang, Campbell Le Heron, Fiona Kumfor, Bernard Bellaine, Tuong-Vu Nguyen, Truc-Quynh Nguyen, My-Ngan Nguyen, Skye McDonald

Task-Induced Subjective Fatigue and Resting-State Striatal Connectivity Following Traumatic Brain Injury

Jessica Bruijell, Conny Quaedflieg, Tobias Otto, Vincent van de Ven, Sven Stapert, Caroline van Heugten, Annemiek Vermeeren

Fatigue After Mild Traumatic Brain Injury: Association with Mood, Life Events, and Alcohol Consumption

Kaisa Mäki, Taina Nybo, Marja Hietanen, Susanna Melkas

Mental Fatigue after Traumatic Brain Injury: Different Determinants across the Severity Spectrum

Sandra Rakers, Annië Reinhardt, Joukje van der Naalt, Jacoba Spikman

Cognitive, emotional and interpersonal determinants of loneliness and belongingness in brain injury survivors

Christian Salas, Hector Ureta, Alvaro Aliaga, Osvaldo Castro, Daniel Rojas, Ramiro Cruces, Jon Evans

Moderators of Functional Outcome Improvement After Integrative Cognitive Remediation in Schizophrenia

Agurne Sampedro, Javier Peña, Pedro Sánchez, Naroa Ibarretxe-Bilbao, Nagore Iriarte-Yoller, Cristóbal Pavón, Mikel Tous-Espelosin, Natalia Ojeda

18:00- 19:20h AXA Auditorium - **SYMPOSIA 6** Neuropsychological research in the Americas: From genes to brain, cognition, and everyday mental health” Sponsored by Asociación Latinoamericana de Neuropsicología (ALAN)

Chair: Mauricio García-Barrera

Yaira Chamorro

Esmeralda Matute

Mónica Rosselli

18:00- 19:20h **PAPER SESSION 15** Cognitive and behavioural determinants of TBI (AXA Hall 1)



Detailed Programme

Verbal episodic memory in children undergoing focal epilepsy surgery

Enric Bellido Castillo, Anna López Sala, Javier Aparicio Calvo,
Daniel Cuadras Pallejà, Andrea Palacio Navarro

Subjective and Objective Memory Change After Epilepsy Surgery: Role of Seizure Outcome and Depressive Symptoms

Florian Muecke, Marc Hendriks, Christian Bien, Philip Grewe

The Impact of Mood on Neuropsychological Test Performance in Epilepsy

Sallie Baxendale

Demand-dependent Psycholinguistic Phenotypes in Temporal Lobe Epilepsy: Circumstantiality Re-examined

Fiore D'Aprano, Charles Benjamin Malpas, Michael Martin Saling

18:00- 19:20h NH Constanza Hotel - Barcelona Hall - **SYMPOSIA 7**

Impact of cultural diversity on neuropsychological assessment and rehabilitation"

Sponsored by the INS Student Liaison Committee

18:00- 19:20h **PAPER SESSION 16** Neuropsychology of Epilepsy

(NH Constanza Hotel - Berlin Hall)

Neurocognitive Outcomes Following Mild Traumatic Brain Injury in Military Special Operations Forces

Lars Hungerford, Mark Ettenhofer, Jenna Trotta

Personal Factors and Long-term Outcome After Acquired Brain Injury: the Role of Resilience and Mood

Ieke Winkens, Caroline Van Heugten, Carina Resch, Anne Visser-Meily

Cognitive impairments and subjective cognitive complaints in survivors and caregivers after a cardiac arrest

Caroline van Heugten, Veronique Moulaert, Catherine Steinbusch, Pauline van Gils, Jeanine Verbunt

Identification of At-Risk Patients that need more Intensive Treatment Following mTBI: Post-Hoc Insights

Myrthe Scheenen, Harm Jan van der Horn, Myrthe de Koning, Joukje van der Naalt, Jacoba Spikman

Prognostic study of functionality and cost-effectiveness after traumatic brain injury using machine learning

Joan Ferri, Julio Silva-Rodríguez, Adrián Colomer, Valery Naranjo, Myrtha O'Valle, Desiree Amorós, Silvia Cerezo, Carmen García-Blazquez, Pablo Villarino, M^a Dolores Navarro, Enrique Noé, Roberto Llorens



Detailed Programme

FRIDAY, July 8TH

8:30-10:00h AXA Auditorium - **SYMPOSIA 8** Across cultures and languages: Neuropsychological assessment of patients with focal and neurodegenerative disease

Sponsored by the INS Cultural Special Interest Group

Chairs: Francesca Arias and Claudia Jeannette Peñaloza

Translate an existing test in another language or develop an original test? Factors to consider

Brooke Hallowell

Cultural and linguistic aspects in neuropsychological assessment of neurodegenerative diseases in Arabic

Mohamed Taiebine

The adaptation and standardization of the Catalan version of the Comprehensive Aphasia Test

Io Salmons

Cross-language interference and facilitation in neurodegenerative diseases

Marco Calabria

8:30-10:00h AXA Hall 1 - **WORKSHOP** (Sponsored by the INS Student Liaison Committee) "Premorbid estimates of cognitive abilities"

8:30-10:00h **PAPER SESSION 17** Short term and long term Outcomes in TBI outcomes (NH Constanza Hotel - Barcelona Hall)

Developement of an Anterograde Topographic Orientation Abilities Assessment Task in a VR Environment.

Pablo Rodriguez Prieto, Joaquín Alejandro Ibañez Alfonso

The Multi-modal Evaluation of Sensory Sensitivity (MESSY): how to Assess a Commonly Missed Stroke Symptom

Hella Thielen, Nora Tuts, Lies Welkenhuyzen, Irene Huenges Wajer, Christophe Lafosse, Robin Lemmens, Alain Wibail, Céline Gillebert

Why a VR math cognition test?

Elena Salillas, Gema Climent

WISC-V structure by using Bayesian causal model discovery (BCCD) as an alternative for CFA

Marc Hendriks, Marjolein van Dijk, Izak Bragt, Paul van der Heijden

Validity of the Dynamic Clock Drawing Task for Assessing Learning Potential in Elderly Stroke Patients

Martine Wilbers, Chantal Geusgens, Caroline van Heugten

8:30-10:00h NH Constanza Hotel - Berlin Hall - **SYMPOSIA 9** Neuropsychological Evaluation and Tasks Proposals to meet needs of the Legal Context

Chair: Andrea Horta-Barba

Neuropsychological Evaluation and Tasks Proposals to meet needs of the Legal Context

Julia C. Daugherty

The IDEAL Scale to Staging "Care Needs" in People with Dementia: The Spanish Validation Experience

Raúl López Antón

Premorbid Intelligence Calibrated Norms: The Word Accentuation Test and Pseudo-Words Reading Subtest

Rocio Del Pino



Detailed Programme

Neuropsychological Evaluation and Tasks Proposals to meet needs of the Legal Context

Stefano Zago

10:00-11:30h AXA Auditorium - **SYMPOSIA 10** Debate: Detection, filiation, assessment and treatment of visuoperceptive and visuospatial disorders in brain damage
Sponsored by the Spanish Consorcio de Neuropsicología Clínica
Chair: Manuel Cid

10:00-11:30h **PAPER SESSION 18** Novelty approaches to Neuropsychological assessment (AXA Hall 1)

Detecting Pre-Clinical Signs of MCI or Dementia in Healthy Elderly Populations: A new Paradigm, the VALMT

Terry McGibbon, Ashok Jansari

Association Between CSF Biomarkers and the Test of Memory Strategies in Mild Cognitive Impairment Patients

Anna Carnes-Vendrell, Gerard Piñol-Ripoll, Brenda Chino-Vilca, Lucia Torres-Simon, Agnieszka Żelwetro, Inmaculada Concepción Rodríguez-Rojó, Raquel Yubero, Nuria Paul, Fernando Maestu

Multidimensional Aspects of Health in a Cognitive Aging Sample

Emily Ho, Molly Mather, Sandra Weintraub, Richard Gershon

Phonological and Semantic Features of Lexical Retrieval in Primary Progressive Aphasia

Marco Calabria, Francesco Ciongoli, Clara Martin, Simona Mancini, Sonia Marqués Kiderle, Isabel Sala, Nuole Zhou, María Belén Sánchez-Saudinós, Juan Fortea, Alberto Lleó, Ignacio Illán-Gala, Miguel Ángel Santos-Santos

Anhedonia in Frontotemporal Dementia - Neural Substrates and Functional Implications

Siobhán Shaw, Hashim El-Omar, Tao Chen, John Hodges, Olivier Piguet, Rebekah Ahmed, Alexis Whitton, Muireann Irish

10:00-11:30h **PAPER SESSION 19** From MCI to Dementia: What's new (NH Constanza Hotel - Barcelona Hall)

Exploring Neuropsychological Performance as an Endophenotype in Schizophrenia Spectrum Disorders

Nancy Murillo-García, Alexandre Díaz-Pons, Luis Manuel Fernández-Cacho, Margarita Miguel-Corredera, Sara Martínez-Barrio, Víctor Ortiz-García de la Foz, Karl Neergaard, Rosa Ayesa-Arriola

White Matter Correlates of Mentalising Subfields in Schizophrenia and the role of Interleukin-6

Tom Burke, Laurena Holleran, David Mothersill, Sinead King, Saahithh Patlola, Karolina Rokita, Nathan O'Rourke, James Lyons, Ross McManus, Marcus Kenyon, Colm McDonald, Brian Halligan, Aiden Corvin, Derek Morris, John Kelly, Declan McKernan, Gary Donohoe

The utility of EPICOG-SCH screening battery in clinical settings: A case series of cognition and functionality

Silvia Zaragoza Domingo, Julio Bobes, Manuel De Gracia, Bernat Campins, Gemma Escartin, Maria Paz García-Portilla, Silvia Moron, Jolanda Ruiz

Epigenetic effects of cognitive remediation therapy in persons with schizophrenia

Rafael Penadés, Carmen Almodóvar, Clemente García-Rizo, Silvia Amoretti, Victoria Ruiz, Rosa Catalán, Mar Fatjó-Vilas, Bárbara Arias



Detailed Programme

10:00-11:30h NH Constanza Hotel – Berlin Hall - **SYMPOSIA 11** Challenges and Advances in Cross-Cultural Neuropsychology in Europe
Chair: Inmaculada Ibáñez-Casas

European Consortium on Cross-Cultural Neuropsychology (ECCroN)

Clara Calia

The Timely Diagnosis of Dementia in Minority Ethnic Groups in Europe (TIMING) Project

T. Rune Nielsen

Detection of Alzheimer's Disease in Multicultural Populations: What's new About the TNI-93 Memory test?

Pauline Narme

Brain and Culture in Europe: the EMBRACED Battery

Inmaculada Ibanez-Casas

CCD and CNTB in Spain and Minority Population in Alzheimer, Parkinson, and Multiple Sclerosis

Alfonso Delgado-Alvarez

11:30-12:00h MORNING COFFEE BREAK + POSTERS SESSION 4

POSTERS SESSION 4

Executive Function is More Predictive than Pain for Psychological Experiences in Older Adults with Diabetes

Hsiao-Ting Ho, Sang-I Lin, Nai-Wen Guo, Yi-Ching Yang, Ming-Hsing Lin, Chong-Shan Wang

Facial emotion recognition in Parkinson's disease: the role of executive and affective domains

Antonia Siquier, Pilar Andres

Parental Education Level and English Proficiency: Influences on the Spanish BRIEF-2

Glena Andrews, Natalia Rich-Wimmer

The Executive Function of VLBW and ELBW Preterm Children with Normal Early Development

Tzu-Lo Ni, Chao-Ching Huang, Nai-Wen Guo

Impaired Executive Functioning Associated with Alcohol Use Disorder and Alcoholic Korsakoff's Syndrome

Gweny Janssen, Roy Kessels, Jos Egger

Executive Attention, Internalizing Symptomatology, and the Moderating Effects of Rejection Sensitivity

Alex Roseman, Dr. Kevin Meehan Ph.D.

An intervention of Executive Functions to Improve the Academic Performance in Students of Primary School

Amilkar Calderón, Esmeralda Martínez, Helmer Chacon, Martha Méndez, Roselin Villalba

Altered Executive Functions in Adolescents with Problematic Smartphone Use

María José Fernández-Serrano, Irene Tauste-García, Sandra Santiago-Ramajo, María Moreno-Padilla, Juan Verdejo-Román

Neurocognitive Operations Underlying Executive Abilities: An Analysis of Latency and Time-Based Parameters

Sheina Emrani, Melissa Lamar, Catherine C. Price, Rod Swenson, David J. Libon, Ganesh Baliga



Detailed Programme

Effects of Confinement During CoVID-19 in Executive Functions in Development: Preliminary Results

Cristina Solleiro, María Quiros-Godoy, Beatriz Gil-Gomez de Liano, Elena Perez-Hernandez

Influence of a Physical Activity Self-Monitoring Record on Attentional Ability

Raquel Mula-Forte, Emilio Verche

Arithmetic Skills of Young Adults with ADHD

Lourdes Bolaños, Fernanda Romo, Esmeralda Matute

Improving Learning in ADHD: Relevance of Attentional Capacity in the Use of MI and SG Techniques

Maria Arenas, Diego Rivera, Carlos De los Reyes

Perception of Symptoms and Mental Health of Parents of Children with ADHD

Natalia Suárez Yepes, Gustavo Lora Sandoval, Angela Ximena Lopez Rico, Luis Augusto Carrillo, Heber Osiel Morales Lopez, Susset Beatriz Fernandez Menendez, Carlos Jose De los Reyes Aragon

Interference effect from visual peripheral distractors in deaf children

Laura Fernández García, Jessica Phillips-Silver, María Teresa Daza González, Nahuel Gioiosa Murno

Age moderates the relation of mentalization and multidimensional emotion perception in children

M. Acebo Garcia-Guerrero, Javier Peña, Leire Zubiaurre-Elorza

Emotion Regulation in Monozygotic Twins: a Cross-Sectional Study

Victoria Gerdaldi Menegon, Nara Andrade, Tania Kiehl Lucci, Vinicius Frayze David, Emma Otta

Differences in Emotion Recognition Between Various Neurological Disorders.

A. Heegers, S.E. Rakers, H.J. Westerhof-Evers, L.S. Jorna, S. Khosdelazad, A.M. Buunk, J.M. Spikman

Is There a Direct Link Between Social Disinhibition and Aggression After Severe TBI?

Michaela Filipčíková, Travis Wearne, Skye McDonald

Neuropsychological Impact of COVID-10 on Health Workers: Emotion and Coping Skills

Gómez-Pulido Almudena, Montero Miek, Varela Carmen, De la Vega Ariadna, Serrano Elena

Sleep impacts academic performance among college students

Evelyn Dubon, Rozhin Afshar, Ron Duran

Attention Deficiencies in Children with Developmental Dyslexia

Yiannis metaxas

Academically successful adults with dyslexia: Support for the cognitive compensatory hypothesis

Vanesa Lozano, Francisca Serrano, Antonio E. Puente, Inmaculada Ibañez-Casas

Identification of Early Neurological Predictors of Learning Disorders: Systematic Review and Meta-Analysis

Maryam Alabbad, Muhammad Ajmal Khan, Nadeem Siddique, Shahid Bashir, Turki Abualait

Interhemispheric and Intrahemispheric RS-FC in Left-Handers with Typical and Atypical Language Lateralization

Eva Calderón-Rubio, Anna Miró-Padilla, Esteban Villar-Rodríguez, Lidón Marin-Marin, César Ávila

Intraoperative Neuropsychology

David Benitez, Rita M. Rivera



Detailed Programme

Transcranial Electrical Stimulation Techniques Comparison on Foreign Language Learning: a Pilot Study

Yolanda Balboa-Bandeira, Leire Zubiaurre-Elorza, M. Acebo García-Guerrero, Naroa Ibarretxe-Bilbao, Natalia Ojeda, Javier Peña

Use of Transcranial Direct Current Stimulation in the Rehabilitation of Hemineglect in Stroke: A case Report.

Begoña González Rodríguez, Elena Muñoz Marrón, David De Noreña Martínez, Francisco Jose Sánchez Cuesta, Aída Arroyo Ferrer, Yeray González Zamorano, Marcos Ríos Lago, Juan Pablo Romero Muñoz

No association between TEED and verbal fluencies after DBS in patients with Parkinson's disease

Fabiana Ruggiero, Francesca Mameli, Natale Maiorana, Sara Marceglia, Marco Prenassi, Linda Borellini, Filippo Cogiamanian, Elena Pirola, Eleonora Zirone, Denise Mellace, Benedetta Capetti, Luigi Gianmaria Remore, Giorgio Fiore, Maria Rita Reitano, Michelangelo Dini, Marco Locatelli, Sergio Barbieri, Alberto Priori, Roberta Ferrucci

Neural basis of visuospatial tests in behavioral variant frontotemporal dementia

Alfonso Delgado-Alvarez, María Nieves Cabrera-Martín, María Valles-Salgado, Cristina Delgado-Alonso, María José Gil, María Díez-Cirarda, Jorge Matías-Guiu, Jordi A. Matías-Guiu

Is repetitive Transcranial Magnetic Stimulation successful for the rehabilitation of visuo-spatial neglect?

Monica N. Toba, Anna Kaglik, Solohaja Faniaha Dimby, Federica Rastelli, Pascale Pradat-Diehl, Antoni Valero-Cabré

Aphantasia: Case Report

Xavier Montaner

Improving Creativity with Combined Transcranial Direct Current (tDCS) and Random Noise (tRNS) Stimulation

Javier Peña, Agurne Sampedro, Oihana Zabala, Naroa Ibarretxe-Bilbao, Acebo García, Leire Zubiaurre-Elorza, Natalia Ojeda

Creativity and transcranial non-invasive stimulation with transcranial random noise stimulation

Oihana Zabala-Gómez, Agurne Sampedro, Natalia Ojeda, Naroa Ibarretxe-Bilbao, Olaia Lucas-Jiménez, Javier Peña

Changes in Brain Activation after Functional Neurosurgery in Refractory OCD

Garazi Laseca-Zaballa, Marcos Ríos-Lago, Genny Lubrini, Jose Antonio Periañez, Manuela Martín Bejarano, Cristina Torres-Díaz, Nuria Martínez Moreno, Juan Álvarez-Linera, Roberto Martínez Álvarez

White matter Correlates of Executive Functions: a neuropsychological study using Diffusion Tensor Imaging.

Manuela Martín-Bejarano, Jose Antonio Periañez, Genny Lubrini, Blanca Navarro-Main, Garazi Laseca-Zaballa, Juan Álvarez-Linera, Marcos Ríos-Lago

Testing the RST Factorial Structure on a Voxel-Based Morphometry Dataset: A Confirmatory Factorial Analysis

Elena Lacomba-Arnau, Agustín Martínez-Molina, Jorge Moya-Higueras, Alfonso Barrós-Loscertales



Detailed Programme

Language Perception in Schizophrenia: a Neuroimaging Study

Lucila Barbosa, Joan Soler-Vidal, María Ángeles García-León, Paola Fuentes-Claramonte, Pilar Salgado-Pineda, Nuria Ramiro, María Llanos Torres, Antonio Arévalo, Amalia Guerrero-Pedraza, Ana Aquino, Sandra Fernández-Núñez, Josep Munuera, Salvador Sarró, Raymond Salvador, Wolfram Hinzen, Peter McKenna, Edith Pomarol-Clotet

Defining and Characterizing GWI Pathology using Longitudinal Brain Imaging Biomarkers

Jenna Groh, Chia-Hsin Cheng, Bang-bon Koo, Ronald Killiany, Maxine Krengel, Kimberly Sullivan

12:00-13:00h AXA Auditorium - **PLENARY KEYNOTE** Hans-Otto Karnath “Spatial neglect and the vestibular system”

13:00-14:00h **LUNCH BREAK**

14:00-15:20h AXA Auditorium - **SYMPOSIA 12** The contribution of somatosensory deficits to different clinical phenomena

Sponsored by the Federation of European Societies of Neuropsychology (FESN)

Chair: Hans-Otto Karnath

Interacting Components of Body Perception in various Clinical Conditions

Chris Dijkerman

Somatosensory Delusion in Embodiment/Disembodiment Neuropsychological Syndromes

Anna Berti

Somatomotor Processing in Tourette Syndrome

Stephen Jackson

14:00-15:20h **PAPER SESSION 20** Assessment and Intervention in cognition in Schizophrenia (AXA Hall 1)

A Meta-Analytic Review of Memory in Children Born Very Preterm or with Very Low Birthweight

Paulina M. Stedall, E. Sabrina Twilhaar, Megan M. Spencer-Smith, Emma F. Campbell, Rebecca N. Brown, Alice C. Burnett, Peter J. Anderson

Pervasive Episodic and Selective Prospective Memory Difficulties in 13-Year-Old Children Born Very Preterm

Paulina M. Stedall, Megan M. Spencer-Smith, Suncica Lah, Lex W. Doyle, Alicia J. Spittle, Alice C. Burnett, Peter J. Anderson

Longitudinal Changes in Cognitive Functioning in Extremely Low Gestational Age Newborns: Ages 2 to 15 Years

Stephen Hooper, Robert Joseph, Hudson Santos, Xianming Tan, Rachana Singh, Jean Frazier, Karl Kuban, Rebecca Fry, Thomas O'Shea

Contribution of the social cognition evaluation battery “clacos” in autism spectrum disorder

Shasha Morel-Kohlmeyer, Charlotte Danset-Alexandre, Alix Thillay, Sylvie Roux, Isabelle Amado, Lindsay Brenugat, Isabelle Carteau-Martin, Baptiste Gaudelus, Jérôme Graux, Elodie Peyroux, Zelda Prost, Marie-Odile Krebs, Nicolas Franck, Frédérique Bonnet-Brilhault, Emmanuelle Houy-Durand

Emotions in adolescents with history of emotional neglect: fMRI Study

Eduar Herrera, Sandra Báez

Perceived Cognitive Impairment and Psychosocial Adversity in High School Students

Ila Iverson, Grant Iverson



Detailed Programme

14:00-15:20h PAPER SESSION 21 Neurodevelopmental neuropsychology
(NH Constanza Hotel – Barcelona Hall)

Learning Capacity in Early-Stage Alzheimer's Disease: The Role of Feedback and Errors

Inge Scheper, Inti Brazil, Dirk Bertens, Sofie Geurts, Roy Kessels

Favorites test is associated with amyloid and p-tau181 positivity in cognitively unimpaired individuals

Anna Brugulat-Serrat, Elena Tsoy, Gonzalo Sánchez-Benavides, Alba Cañas-Martínez, Lidia Canals-Gispert, Marta Milà-Alomà, Marc Suárez-Calvet, Oriol Grau-Rivera, Carolina Minguillon, Karine Fauria, Juan Domingo Gispert, Joel H. Kramer, Katherine Possin, EPAD Consortium

Discrepancy Between Visual and Verbal Working Memory is Related to PTau217 in abnormal Amyloid- β Individuals

Gonzalo Sánchez-Benavides, Lidia Canals-Gispert, Alba Cañas-Martínez, Anna Brugulat-Serrat, Marta Milà-Alomà, Marc Suárez-Calvet, Carolina Minguillon, Thomas Karikari, Nicholas Ashton, Henrik Zetterberg, Kaj Blennow, Juan Domingo Gispert, Oriol Grau-Rivera

The Recency Ratio in Story Recall Predicts Dementia Biomarkers

Davide Bruno, Ainara Jauregi Zinkunegi, Gwendlyn Kollmorgen, Ivonne Suridjan, Cynthia Carlsson, Barbara Bendlin, Ozioma Okonkwo, Bruce Hermann, Henrik Zetterberg, Kaj Blennow, Rebecca Langhough Kosciak, Sterling Johnson, Kimberly Mueller

14:00-15:20h PAPER SESSION 22 Cognition, biomarkers and dementia
(NH Constanza Hotel – Berlin Hall)

Audit of Pathway of Patients in Disorders of Consciousness in a Scottish Inpatient Neurorehabilitation Setting

Blanca Poveda, Thomas McMillan, Alasdair FitzGerald

Case Management for People with Acquired Brain Injury and Their Family

Annemarie P.M. Stiekema, Caroline M. van Heugten

Effect of Transcranial Direct Current Stimulation (tDCS) in Patients with Disorders of Consciousness

Aurore Thibaut, Géraldine Martens, Anna Estraneo, Salvatore Fiorenza, Enrique Noé, Roberto Llorens, M Dolores Navarro, Myrtha O'Valle, Rita Formisano, Giovanni Morone, Andreas Bender, Martin Rosenfelder, Gianfranco Lamberti, Ekaterina Kodratyeva, Liudmila Legostaeva, Carmen Krewer, Friedemann Müller, Steven Laureys, Olivia Gosseries, Nicolas Lejeune

15:30-16:50h PAPER SESSION 23 Management and clinical decisions following TBI (AXA Auditorium)

Investigating the Relationship of Brain Age Gaps & Psychiatric Symptoms

Celine Shu Ying Chan¹

The Effect of Core Cognitive Dysfunction on Memory in People with Mood Disorders

Bethany Little, David Cousins, Yujiang Wang, Peter Gallagher

Sex differences in cognitive reserve among first episode of psychosis patients

Rebeca Magdaleno Herrero, Victor Ortiz-García de la Foz, Nancy Murillo-García, Javier Vázquez-Bourgon, Esther Setién-Suero, Benedicto Crespo-Facorro, Rosa Ayesa-Arriola



Detailed Programme

Affective and Cognitive Symptoms in Cerebellar Degeneration after Non-alcoholic Wernicke's Encephalopathy

Nicolaas J.M. Arts, Maud E.G. van Dorst, Sandra H. Vos, Roy P.C. Kessels

15:30-16:50h PAPER SESSION 24 Neuropsychiatry and cognition (AXA Hall 1)

Long-Term Outcomes in Low-Risk Preterm-Born Adolescents and Young Adults

Lexuri Fernández de Gamarra-Oca, Natalia Ojeda, Begoña Loureiro, Marta Molins-Sauri, Ainara Gómez-Gastiasoro, Olga Bruna, Javier Peña, Naroa Ibarretxe-Bilbao, M. Acebo García-Guerrero, Leire Zubiaurre-Elorza

Impact of Sleep on Attention-Executive Functioning in Children with Neurodevelopmental-Disorders.

Carolina Morales, Aritz Aranbarri, Ares Sentenach, Oscar Sans, M^a Ángeles Mairena, Ester Camprodon, Imma Insa, Jose Ángel Alda

Improving Adaptive Skills of College Students Diagnosed with Autism Spectrum Disorder

Ali Mahamat

Language Development in Early-ASD: A new use of the CDIs.

Aritz Aranbarri, Judith Decathalogne, Beatriz Daudén, María Díez-Juan

15:30-16:50h PAPER SESSION 25 Factors influencing developmental disorders outcomes (NH Constanza Hotel - Barcelona Hall)

Face Name Matching and Memory Complaints in Parkinson's Disease

Antonia Siquier, Pilar Andres

Pilot phase of the vCare "Virtual Coaching Activities for Rehabilitation in Elderly" in Parkinson's disease

Rocio Del Pino, Maria Diez-Cirarda, Alvaro Martínez, Massimo Caprino, Stefan Busnatu, Vitto Nitti, Emanuel Sadner, Jin Liu, Mircea Vasile, Kai Gand, Hannes Schlieter, Iñigo Gabilondo, Juan Carlos Gómez-Esteban

Dementia Rating Scale-2: Three-Year Follow-up of Surgical and Non-Surgical Parkinson's Disease Patients

Alexandra Gonçalves, Alexandre Mendes, Nuno Vila-Chã, Joana Damásio, Inês Moreira, António Verdelho, Carla Silva, Luís Botelho, Armando Teixeira-Pinto, Sara Cavaco

Sleep disorder in patients with Parkinson's Diseases underwent to NST-DBS

Catalina Pons, Ignacio Cifre, Carmen García-Sánchez, Berta Pascual-Sedano, Nicholas Grunden, Rodrigo Rodríguez-Rodríguez, Alex Gironell, Jaime Kulisevsky

Differences in Visual-Cognition Between Asymptomatic and Symptomatic Carriers of Huntington's Disease

Miriam Turuelo, María Ángeles Acera, Tamara Fernández-Valle, Johanne Somme, Javier Ruíz-Martínez, Lara Pardina-Vilella, Andrea Gabilondo, Beatriz Tijero, Marta Ruíz-López, Mar Carmona, Ioana M. Croitoru, Naia Ayo, Ane Murueta-Goyena, Iñigo Gabilondo, Juan Carlos Gómez-Esteban, Rocio Del Pino

Structural Brain Differences Between Lewy Body Diseases Subtypes Based on Nonmotor Symptoms

Olaia Lucas-Jiménez, Naroa Ibarretxe-Bilbao, Ibai Diez, Javier Peña, Beatriz Tijero, Marta Galdós, Ane Murueta-Goyena, Rocío Del Pino, Maria Ángeles Acera, Juan Carlos Gómez-Esteban, Iñigo Gabilondo, Natalia Ojeda

15:30-16:50h PAPER SESSION 26 Movement Disorders and dementia (NH Constanza Hotel - Berlin Hall)



Detailed Programme

Family aggregation of the Intelligence Quotient: understanding its role in first episode of psychosis

Nancy Murillo-García, Jordi Soler, Mar Fatjó-Vilas, Rosa Ayesa-Arriola

Theory of mind as an Endophenotypic Marker in Schizophrenia Spectrum Disorders: Family Study

Georgelina Abreu Fernandez, Rosa Ayesa Arriola

Alterations in social perception in first psychotic episodes: Intervention proposal.

Yadhira Barroso Rosales

Examination of the Executive Dysfunction Hypothesis of Formal Thought Disorder in Schizophrenia

Pablo del Olmo, Laura López-Araquistain, Paola Fuentes-Claramonte, Salvador Sarró, Bibiana Sans-Sansa, Jordi Ortiz-Gil, Jesús J. Gomar, Joana Rosselló, Peter J. McKenna, Edith Pomarol-Clotet

17:00-17:30h AFTERNOON COFFEE BREAK + POSTERS SESSION 5

POSTERS SESSION 5

The Role of Different Cognitive Reserve Proxies in Cognitive Functioning Across the Adult Lifespan

Joukje Oosterman, Michelle Jansen, Linda Geerligs, Nikita Frankenmolen

Implicit Sequence Learning in Elderly - Measured by an Oculomotor Activated Serial Reaction Time Task (O-SRT)

Simone Schwizer Ashkenazi, Shira Hachohen-Brown, Eli Vakil

Physical Activity During Midlife: Associations with Brain, Mental and Cognitive Health

Muge Akinci, Carme Deulofeu, Eleni Palpatzis, Cleofé Peña-Gómez, Sherezade Fuentes-Julian, Gregory Operto, Marina Garcia-Prat, Mahnaz Shekari, Anna Brugulat-Serrat, Juan Domingo Gispert, Gonzalo Sánchez-Benavides, Eider M. Arenaza-Urquijo

Association between resilience to stress in the elderly people and performance in iadl

Noelia Sáez, Encarnación Sanchez, Sandra Rute, Alfonso Caracuel

Factors influencing mobile phone use in older adults

Araceli Revollo Sarmiento, Leticia Vivas, Deisy Krzemien

Expanding Retrieval Practice Boost Episodic Memory in Individuals with Amnesic Mild Cognitive Impairment

Chia-Hsing Chi, Yu-Ling Chang

Electrophysiological Correlates of Associative Recognition Memory for Identity, Spatial and Temporal Relations

Ofer Huger, Eli Vakil, Daniel A. Levy

The Influence of Drawing on Memory Formation: A Lesion-Based Approach

Adina Levi, Adam Pugsley, Myra Fernandes, Gary R. Turner, Asaf Gilboa

Differential Effect of Executive Function on the Memory Binding Test and Logical Memory in Healthy Cognition

Alba Cañas-Martínez, Lidia Canals-Gispert, Anna Brugulat-Serrat, Nina Gramunt-Fombuena, Marta Milà-Alomà, Carolina Minguillon, Juan Domingo Gispert, Oriol Grau-Rivera, Gonzalo Sánchez-Benavides

Memory and Stress: Findings in Normal-Weight Population

Anna Prunell-Castañé, Maite Garolera, Xavier Caldú, Jonatan Ottino-González, Consol Sánchez-Garre, María José Sender, Neus Cano-Marco, Isabel García-García, María Ángeles Jurado



Detailed Programme

Relationship between Working Memory and Cognitive Empathy in IPV perpetrators against women

Noelia Pérez Cámara, María Pérez González, Natalia Hidalgo Ruzzante, Juan Verdejo Román, Inmaculada Teva Álvarez, Agar Marín Morales, Sofía Amaoui, Miguel Pérez García, Natalia Bueso Izquierdo

Naming of Topography: Long-Lasting Theta and Long-Lasting Alpha Dissociable Oscillatory Activity

Cristiane Souza, Margarida Vaz Garrido, Khaoula Ennhali, Joana Costa do Carmo

The Effect of Intervals After Practicing of a Simple Motor Task and a Complex cognitive Task

Iris Lowenscuss-Erich, Avi Karni, Carmit Gal, Eli Vakil

Automatized FACEmemory® Scoring Related to Alzheimer's Disease Phenotype and Biomarkers in Early-onset MCI

Montserrat Alegret, Oscar Sotolongo-Grau, Ester Esteban de Antonio, Alba Pérez-Cordón, Adelina Orellana, Ana Espinosa, Silvia Gil, Daniel Jiménez, Gemma Ortega, Angela Sanabria, Natalia Roberto, Isabel Hernández, Maitee Rosende-Roca, Juan Pablo Tartari, Emilio Alarcon-Martin, Itziar de Rojas, Laura Montreal, Xavier Morató, Amanda Cano, Dorene M. Rentz, Lluís Tárraga, Agustín Ruiz, Sergi Valero, Marta Marquié, Mercè Boada

Classification Of MeMory INterventions: Development of the COMMIT tool

Michelle G. Jansen, Joukje M. Oosterman, Ann-Kristin Folkerts, Digo Chakraverty, Roy P.C. Kessels, Elke Kalbe, Mandy Roheger

"Take Care of your Brain". Catalan Brain Health Prevention and Detection Program

Juan Luis García Fernández, Cristina Borrás Flores

Olfactory Function Reflects Medial Temporal Lobe Integrity in Individuals at Risk for Alzheimer's Disease

Zoe Papadatos, Natalie Phillips

Validation of the Comprehensive Assessment of Neurodegeneration (COMPASS-ND) Study Neuropsychological Battery

Natalie Phillips, Jennifer Fogarty, Michael Borrie, Howard Chertkow, The COMPASS-ND Neuropsychology Working Group

Emotion Recognition in Vascular Dementia Compared to Frontal Temporal Dementia and Alzheimer's Disease

Fijanne Strijkert, Rients Huitema, Barbara Van Munster, Joke Spikman

Background Music and Memory in Mild Cognitive Impairment: The Role of Arousal

Ciongoli Francesco, Calabria Marco, Grunden Nicholas, García-Sánchez Carmen

An integrated virtual reality program of prospective memory in a case of prodromal Alzheimer's Disease

Valentina La Corte, Agnes Michon, Sophie Ferrieux, Maria Abram, Bruno Dubois, Pascale Piolino

Efficacy of an Online Focused Holistic Neuropsychological Intervention for Older Adults with Cognitive Decline

Tal Shany-Ur, Sari Maril, Naama Kivilis-Meiri, Ayala Bloch

Verbal Fluency in Bilinguals and Monolinguals with MCI: A Six-Month Follow-Up Study

Laura Casas, Inmaculada Rico, Nuria Rojo, Jordi Gascón, Jaume Campdelacreu, Ramón Reñé, Claudia Peñaloza

Emotion Perception in Mild Cognitive Impairment and High Functioning Autism

Emili Rodríguez-Hidalgo, Iolanda Moga-Pérez, Marta Hernández-Ferrándiz, Manuela Lozano-Gallego, Susanna Esteba-Castillo



Profile and neural correlates of language disintegration in early Huntington's disease

Saul Martinez-Horta, Arnau Puig-Davi, Frederic Sampedro, Jesus Perez-Perez, Jordi Matias-Guiu, Andrea Horta-Barba, Javier Pagonabarraga, Maria Diez-Cirada, Lucia Fernandez-Romero, Miguel Yus, Fernando Cuetos, Jaime Kulisevsky

Deep Brain Stimulation in Dystonia: the Added Value of Neuropsychological Assessments

Maraïke Coenen, Hendriekje Eggink, Martje van Egmond, Marinus Oterdoom, Marc van Dijk, Teus van Laar, Jacoba Spikman, Marina Tijssen

Is the anterior attentional system impaired in patients with Parkinson's disease? A pilot study

Paulina Golinska, Artur Sawicki, Łucja Bieleninik, Mariola Bidzan

Home-to-Home Tele-neuropsychology in Deep Brain Stimulation Assessments of Dystonia Patients During COVID-19

Marina Sarno, Dayana Rodriguez, Scott Harcourt, Annelly Bure, Corneliu Luca, Bonnie Levin

Mood and Dysexecutive Changes are Associated with Caregiver Burden in de novo Parkinson's Disease

Léon de Haan, Anne C. Slomp, Sygrid van der Zee, Maarten C. Eisma, Jacoba M. Spikman, Marleen J.J. Gerritsen

Validation of the BICAMS in Catalan population

Cristina Cano Olivar, Gonzalo Sanchez Benavides, Dolors Badenes, Javier Sotoca, Laura Casas, Marta Almeria, Sonia Arribas

The Effectiveness of an Intensive 3-Back Training in Multiple Sclerosis Patients and the Transfer Effects

Sonia Félix-Esbrí, Alba Sebastián-Tirado, Carla Sanchis-Segura, Cristina Forn

Relationship Between Depression, Fatigue and Cognitive Impairment in Multiple Sclerosis Patients

Alba Sebastián-Tirado, Sonia Félix-Esbrí, Álvaro-Javier Cruz-Gómez, Cristina Forn, Carla Sanchis-Segura

Avaluation of Socioemocional intervention in Multiple Sclerosis

Jordi Sanchez Monteagudo, Maria Lopez Elson, Maria Neus Tico Falguera, Maria Cruz Crespo Maraver, Aurea Autet Puig

Glatiramer Acetate, Oxidation and Cognition in Multiple Sclerosis patients

Anna Gil, Lara Nogueras, Marc Canudes, Hugo Gonzalo, José Serrano, Petya Valcheva, Cristina González, José Vicente Hervás, Silvia Peralta, Maria José Solana, Manel Portero, Luis Brieve

Neuropsychological Rehabilitation on Multiple Sclerosis Patients: Long-Term Results from a Controlled Trial

Inês Ferreira, Sara Cavaco, Ernestina Santos, Raquel Samões, Ana Paula Sousa, Armando Teixeira-Pinto, Ana Martins da Silva

Aerobic Capacity and Strength are Related to Cognitive Functioning in Chronic Stroke Patients

Adrià Bermudo-Gallaguet, Mar Ariza, Daniela Agudelo, Neus Camins-Vila, Michelle de Groot, Rosalia Dacosta-Aguayo, Maria Boldó, Pere Carrasco, Ma José Durà Mata, Maria Mataró

Cognitive Reserve and its Relationship to Cognitive Functioning in a Chronic Stroke Sample

Philippa Watson, Andrea Kusec, Méadhbh Brosnan, Elise Milosevich, Chloe Carrick, Evangeline G Chiu, Nele Demeyere



Detailed Programme

Recovery of Cognitive Functioning Following Aneurysmal and Angiographically Negative Subarachnoid Hemorrhage

Sara Khosdelazad, Lieke S. Jorna, Sandra E. Rakers, Ralf Koffijberg, Rob J.M. Groen, Anne M. Buunk, Jacoba M. Spikman

Delineating a Cognitive Phenotype of Chronic Post-Stroke Fatigue

Chloe Carrick, Andrea Kusec, Elise Milosevich, Pippa Watson, Evangeline Grace Chiu, Nele Demeyere

Applying Artificial Neural Networks on Diagnosis Using Neuropsychological data from a Brief Clinical Protocol.

Vilajosana-Chertó Enric, Rivera-Àvila Neus, Sánchez-Benavides Gonzalo, Perdrix Dúnia, Cabrera-Bean Margarita

Comparing Apparent Diffusion Coefficients and Cognitive Outcomes in Children with Cardioembolic Stroke

Maria Vu, Kirstin Walker, Nomazulu Dlamini

Relationship between nonverbal Intelligence and Distorted Thoughts towards Women in IPV perpetrators

Noelia Pérez Cámara, Agar Marín Morales, Natalia Hidalgo Ruzzante, Natalia Bueso Izquierdo, María Pérez González, Juan Verdejo Román, Inmaculada Teva Álvarez, Sofía Amaoui, Miguel Pérez García

Silent Scars: Neuropsychological and Functional Consequences of Intimate Partner Violence

Nathalia Quiroz-Molinares, Moises Mebarak-Chams, Carlos Jose De los Reyes Aragon

My Brain Made Me Do It: Exploring The Potential Involvement Of Head Injuries In Subsequent Criminal Behaviour

Ashok Jansari, Victoria Jefferies, Pietro Manzella

Comparing Failure Base Rates on the TOMM-1 and Rey-15 in Romanian and Canadian Disability Applicants

Iulia Crisan, Laszlo Erdodi

Does the SIMS Measure Feigned Symptomatology? Data from PTSD Patients in Israel

Odelia Elkana, Alon Sigman, Gal Eldar, Yotam Shchori, Yoram Ben-Yehuda, Dan Segev, Baruch Ponarovsky

Validity Performance in AULA Nesplora Test

Fidel Rebon, Iñigo Altuna, Amaya Lobo, Elena Salillas, Gema Climent

Effects of social security benefits in a performance validity test: clinical population results

Filomena Gomes, Alexandra Gonçalves, Claudia Pinto, Eduarda Almeida, Inês Ferreira, Sara Cavaco

17:30-18:30h AXA Auditorium - **PLENARY KEYNOTE** Adam Brickman "Alzheimer's disease or Alzheimer's diseases? Contemporary classification and the role of white matter abnormalities"

18:30- 19:30h AXA Auditorium - AWARDS & CLOSING CEREMONY PAPERS AND POSTERS AWARDS CEREMONY



Follow us:
www.insbarcelona2022.com

 **@INSBarcelona**
 **#INSBarcelona2022**

Organized by:



Technical secretariat
Avda. Diagonal 511, 4-3 · 08029 Barcelona
congresoredgdps@gruporic.com · www.gruporic.com